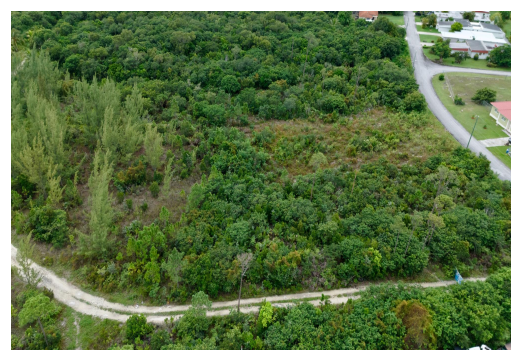


YACHT CLUB, Bahama Terrace Yacht & Country Club,



Lot No. 1, Block 1, Bahama Terrace Yacht & Country Club Subdivision, Section 2 â€“ Bentley...

Lot No. 1, Block 1, Bahama Terrace Yacht & Country Club Subdivision, Section 2 â€“ Bentley Drive, Freeport, Grand Bahama Nestled in the desirable Bahama Terrace Yacht & Country Club Subdivision, this spacious residential lot offers 21,478 sq. ft. (0.493 acres) of level, rectangular landâ€”an ideal canvas for building your dream home. The property enjoys dual road frontage, bounded by Lunar Boulevard to the north (173.15 ft.) and Bentley Drive to the west, providing easy access and a prominent corner position. This peaceful, well-established community is zoned for single-family use and features a modest annual service charge of only \$180. Conveniently located, the lot offers close proximity to everyday essentials and key destinations. With its prime location, excellent accessibility, and ge...read more on our website.

Bedrooms: 0

Bathrooms: 0

Lot Size: 21478

Subdivision: Bahama

Terrace Yacht &

Country Club

Features: None, Treed

Lot

GRAND BAHAMA YACHT CLUB,
Bahama Terrace Yacht & Country Club, Grand
Bahama/Freeport
Phone:



\$42,000 ID# M64249 [View Online](#)
www.sarlesrealty.com