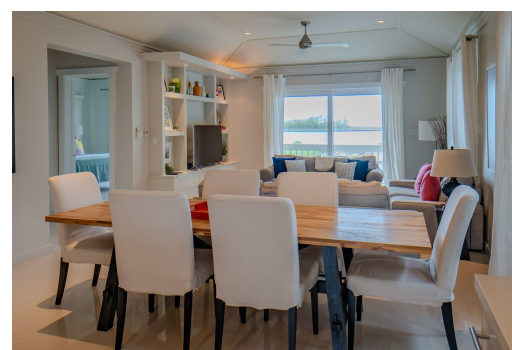


ANCHOR POINT UNIT 1, Governor's Harbour, Eleuthera



Located in the heart of Governor's Harbour, this turnkey two-bedroom, two-bathroom ground-floor...

Located in the heart of Governor's Harbour, this turnkey two-bedroom, two-bathroom ground-floor residence at Anchor Point offers 1,500 sq. ft. of elegantly upgraded living space with panoramic views of Anchor Bay. Features include a spacious open-concept layout, stainless steel kitchen appliances, built-in shelving, ceramic infinity sinks, walk-in showers, and hurricane-impact sliding glass doors opening to a covered balcony. Fully furnished with air conditioning, ceiling fans, washer/dryer, and Wi-Fi, the unit is steps from dining, shops, and beaches. With strong rental history and immaculately maintained grounds, this property is ideal as both a private retreat and an investment opportunity. Daily flights from Nassau and direct U.S. access via Fort Lauderdale and Miami make this an eff...read more on our website.

Bedrooms: 2
Bathrooms: 2
Lot Size: 7841
Subdivision: Governor's Harbour
Features: Appliances Only, Hurricane Windows, Kitchen Built-in(s), Main Level Entry, Short Term Allowed, Stand-by Generator

ANCHOR POINT UNIT 1,
Governor's Harbour,
Eleuthera
Phone:



\$565.000 ID# M63658 [View Online](#)
www.sarlesrealty.com