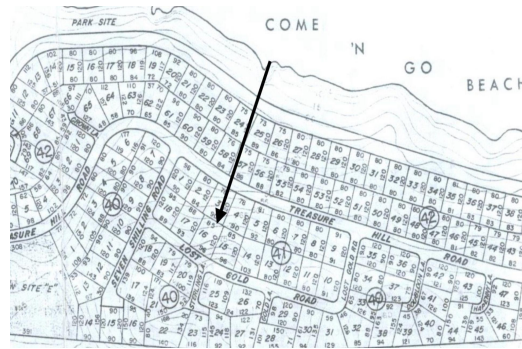


16 LOST GOLD ROAD, Rainbow Bay, Eleuthera



Tucked away on Lost Gold Road, just off Treasure Hill, and also accessible via Seven Shilling Road,...

Tucked away on Lost Gold Road, just off Treasure Hill, and also accessible via Seven Shilling Road, this 10,860 sq. ft. hilltop lot is a true gem waiting to be discovered. With elevations from 85' to 96 feet, the property offers sweeping ocean views and whales may even be spotted passing by on their seasonal migration! Located in the ever-popular community of Rainbow Bay, you'll enjoy access to multiple amenities, including Rainbow Bay Beach, Smuggler's Beach, Driftwood Beach, Hidden Beach, Twin Beach, community parks, walking and jogging paths, tennis and pickleball courts, and shared boat ramps. Electricity and water are conveniently nearby for easy connection, and the lot is situated on a peaceful street, making it perfect for an idyllic island getaway. Centrally positioned for exploration...read more on our website.

Bedrooms: 0

Bathrooms: 0

Lot Size: 10860

Subdivision: Rainbow Bay

Features: Easy Access,

Family Oriented, Hillside,

None, Pets Allowed,

Quiet Area, Treed Lot,

View - Ocean

16 LOST GOLD ROAD, Rainbow

Bay, Eleuthera

Phone:



\$60,000 ID# M63683 [View Online](#)
www.sarlesrealty.com