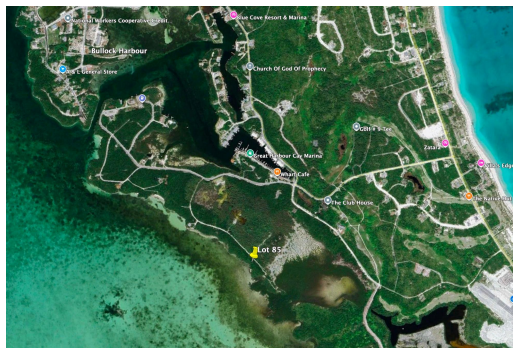


ISABELLA DRIVE, Great Harbour Cay, Berry Islands



Discover the potential of island living with this elevated waterfront lot on the peaceful western...

Discover the potential of island living with this elevated waterfront lot on the peaceful western leeward side of Great Harbour Cay. Just minutes from the renowned Great Harbour Cay Marina- considered one of the best hurricane harbours in The Bahamas. This single-family zoned property offers direct access to world-class bonefishing flats, deep sea fishing, and stunning sunset views. Enjoy nearby shops, restaurants, beaches, and the convenience of an international airport. Ideal for off-grid or on-grid living, with road access and electricity nearby. Waterfront investment opportunity in an undeveloped area perfect for your island escape or future development. Don't miss this slice of Berry Islands paradise!...read more on our website.

Bedrooms: 0

Bathrooms: 0

Lot Size: 15600

Subdivision: Great

Harbour Cay

Features: Golf Course

Nearby, Hillside, Marina

Nearby, No Thru Road,

None, Quiet Area,

Recreation Nearby, Road

- Gravel, Rocky Shore,

Shopping Nearby, Treed

Lot, View - Ocean,

Wooded Area

ISABELLA DRIVE, Great Harbour
Cay, Berry Islands
Phone:



\$130.000 ID# M63960 [View Online](#)
www.sarlesrealty.com