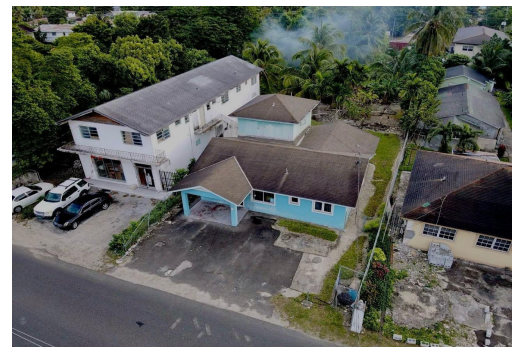


MINNIE STREET, Englerston, New Providence/Paradise Island



Unlock the potential of this prime property conveniently situated just off Wulff Road. Located on...

Unlock the potential of this prime property conveniently situated just off Wulff Road. Located on Minnie Street, this area enjoys a steady flow of high traffic. It is surrounded by a vibrant mix of commercial and residential buildings, making it an ideal spot for business ventures. The lot spans 10,750 sqft, offering substantial space for growth and development. The front features a versatile commercial space currently used for retail, perfect for various business ventures. At the back, there are two rental units: a one-bedroom, one-bathroom apartment and a two-bedroom, one-bathroom apartment. This combination of commercial and residential spaces provides both business potential and rental income opportunities. Don't miss out on this strategically located investment with expansion possibilities...read more on our website.

Bedrooms: 5

Bathrooms: 3

Lot Size: 10750

35 MINNIE STREET, Englerston,

Subdivision: Englerston, New Providence/Paradise Island

Features: Impact Windows

Phone:



\$299,900 ID# M63828 [View Online](#)
www.sarlesrealty.com