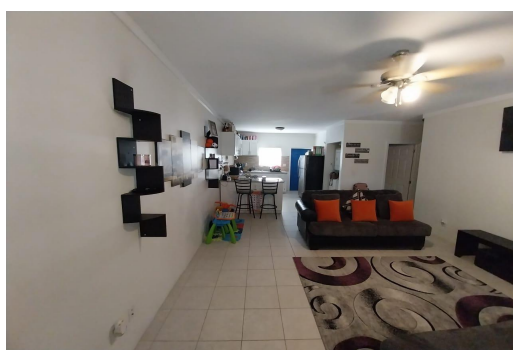


ROSEDALE SUBDIVISION, Carmichael Road, New Providence/Paradise Island



This beautifully renovated duplex offers a prime investment opportunity, with both units currently...

This beautifully renovated duplex offers a prime investment opportunity, with both units currently tenant-occupied and generating \$1,200 per month each in rental income. Each spacious unit boasts 2 bedrooms and 1 bathroom, with an open-concept living and dining area perfect for modern living. Additional features include ample parking space, a major convenience in this neighborhood. Located near top-rated schools, popular businesses, parks, and recreation spots, this property is perfectly situated for both tenants and future buyers. Whether you're an investor looking for reliable rental income or a homeowner seeking to live in one unit while renting the other, this turnkey property offers both comfort and value. Don't miss out on this hassle-free, fully renovated investment!...read more on our website.

Bedrooms: 4
Bathrooms: 2
Lot Size: 5500
Subdivision: Carmichael
Road
Features: None

ROSEDALE SUBDIVISION,
Carmichael Road, New
Providence/Paradise Island
Phone:



\$335.000 ID# M59656 [View Online](#)
www.sarlesrealty.com