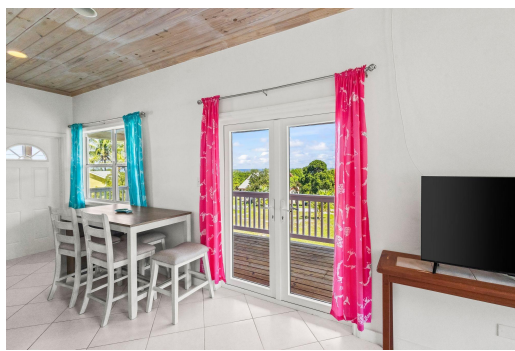


# TOP OCEAN VIEW HOME, Governor's Harbour, Ele



## Perched on an elevated lot in the private enclave of Banana Beach Estates, this charming 2-bedroom,...

Perched on an elevated lot in the private enclave of Banana Beach Estates, this charming 2-bedroom, 2-bath home captures sweeping ocean views, steady island breezes, and the true essence of peaceful Eleuthera living. Set in a quiet, comfortable, and serene location, it feels like a tranquil escape—yet still offers the reassurance of a solid, well-built home. Built in 2014 with durable Hardie board siding and equipped with impact-rated doors facing the ocean, the home provides long-lasting strength and security. Inside, you'll find an open and airy layout with central air conditioning, generous storage throughout, and a spacious deck perfect for relaxing, entertaining, or simply taking in the beautiful ocean scenery. The home is sold fully furnished and move-in ready, complete with househ...read more on our website.

Bedrooms: 2  
Bathrooms: 2  
Lot Size: 10019  
Subdivision: Governor's Harbour  
Features: Can Be Rented, Central location, Furnished, Hillside, Low Maint Yard, Quiet Area, View - Ocean

HILLTOP OCEAN VIEW HOME,  
Governor's Harbour,  
Eleuthera  
Phone:



**\$349,000 ID# M63073** [View Online](#)  
[www.sarlesrealty.com](http://www.sarlesrealty.com)