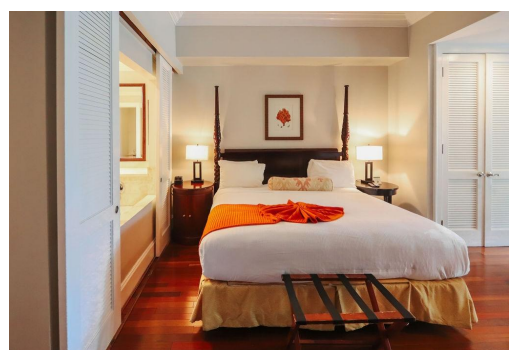
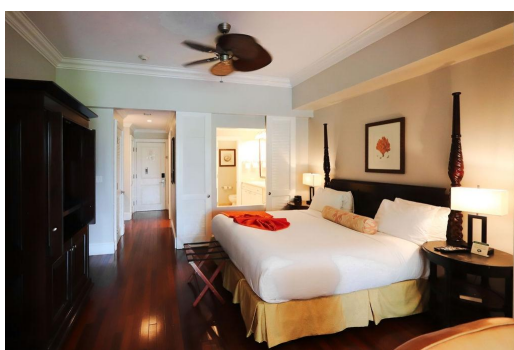


VALENTINES EXUMA UNIT, Harbour Island, Eleuthera



Escape to paradise with this 600 sq ft one-bedroom, one bathroom condo at Valentines Marina and...

Escape to paradise with this 600 sq ft one-bedroom, one bathroom condo at Valentines Marina and Resort. Located in the heart of Harbour Island, this property offers the ultimate lifestyle purchase with a hands-off approach. Enjoy serene garden views from your private 100 sq ft patio, perfect for sipping coffee or watching the sunset. The condo's interior boasts ample space for relaxation and entertainment. As part of the Valentines Marina and Resort community, you'll have access to on-site restaurant for fine dining, sparkling pool for relaxation, convenient shopping stores and grocery stores, full marina for boating enthusiasts, and beach access for Valentines guests only....read more on our website.

Bedrooms: 1
Bathrooms: 1
Lot Size: 600
Subdivision: Harbour Island
Features: 24 Hour Security, Cable, Dock, Garden Area, Hurricane Windows, Impact Windows, Jetted Bathtub, Main Level Entry, Night Security, Swimming Pool, Water Purifier

VALENTINES EXUMA UNIT,
Harbour Island, Eleuthera
Phone:



\$380.000 ID# M64234 [View Online](#)
www.sarlesrealty.com