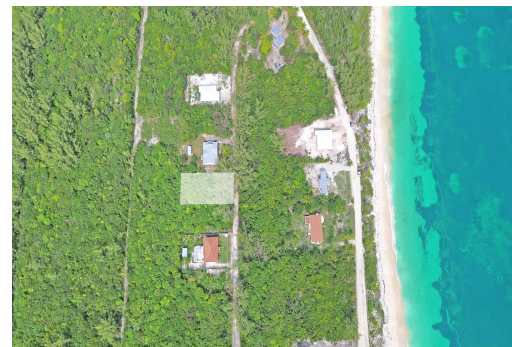


LOT 8 BLOCK 3, Bahama Palm Shores, Abaco



Discover the perfect balance of seclusion and convenience with this expansive 10,000 sq. ft. lot...

Discover the perfect balance of seclusion and convenience with this expansive 10,000 sq. ft. lot located in the peaceful community of Bahama Palm Shores. Just a short stroll away lies beach access to miles of powder-white sand and crystal-clear waters, offering the ultimate island lifestyle. Nestled in a serene neighbourhood, this parcel provides an ideal setting for building your dream home, vacation getaway, or investment property. While private and quiet, Bahama Palm Shores is only a 20-minute drive from Marsh Harbour the vibrant hub of Abaco where you'll find the international airport, grocery stores, restaurants, and nightlife. This is your chance to create a coastal Xretreat that combines the tranquility of a laid-back community with the convenience of nearby amenities....read more on our website.

Bedrooms: 0

Bathrooms: 0

Lot Size: 10000

Subdivision: Bahama Palm

Shores

Features: None

LOT 8 BLOCK 3, Bahama Palm

Shores, Abaco

Phone:



\$30,000 ID# M64094 [View Online](#)
www.sarlesrealty.com