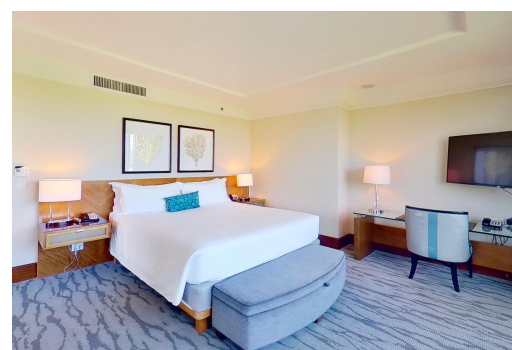
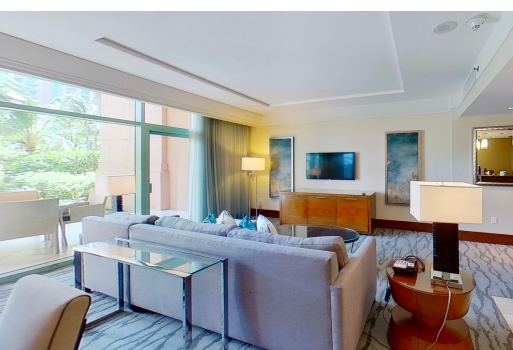


# ADISE ISLAND, Paradise Island, New Providence/Paradise I



**Located on the ground floor of The Reef Tower, Units 1-928 & 1-926 combine to create one of...**

Located on the ground floor of The Reef Tower, Units 1-928 & 1-926 combine to create one of only 22 direct oceanfront suites. This extraordinary 2-bedroom, 3-bathroom Topaz Suite boasts floor-to-ceiling windows with breathtaking, unobstructed views of turquoise waters and immediate access to the pristine white sand beach from your private veranda. Perfect for families with young children or those seeking convenience, this ground-floor suite eliminates the need for elevator rides, offering seamless access to the pools, beach, and world-class Atlantis water park. Luxurious details include marble flooring, Italian cabinetry, plasma TVs, and a built-in BOSE surround sound system. The versatile layout allows the suite to function as a 2-bedroom, 3-bathroom unit or split into a 1-bedroom studio ...read more on our website.

Bedrooms: 2  
Bathrooms: 3  
Lot Size: 0  
Subdivision: Paradise Island  
Features: 24 Hour Security, Adult Oriented, Beach Front, Cable, Can Be Rented, Easy Access, Family Oriented, Furnished, Gated Community, Golf Course Nearby, Impact Windows, Kitchen Built-in(s), Landscaped, Marina Nearby, No Thru Road, Quiet Area, Recreation Nearby, Seniors Oriented, Shopping Nearby, Short Term Allowed, Sprinkler System, Stand-by Generator, Swimming Pool, View - Ocean,

ADISE ISLAND, Paradise Island,

Water Purifier, Water  
Softener, Waterfront -  
Ocean, Wheelchair  
Access

ence/Paradise I

PARADISE ISLAND, Paradise  
Island, New Providence/Paradise  
Island  
Phone:



**\$1.250,000 ID# M60783** [View Online](#)  
**[www.sarlesrealty.com](http://www.sarlesrealty.com)**