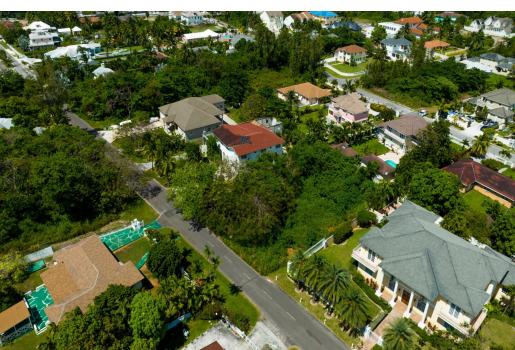


GROVE AVENUE, West Bay Street, New Providence/Paradise



Lot 11 in Vista Marina offers 15,255 square feet of rare residential land perfectly positioned...

Lot 11 in Vista Marina offers 15,255 square feet of rare residential land perfectly positioned between Goodman's Bay and Saunders Beach. Single-family zoned, this sizable parcel provides the space and freedom to design a private estate in a quiet neighborhood while remaining within walking distance of beaches, shops, and nightlife. Just minutes from Cable Beach and the Baha Mar Resort, the location offers dining, retail, schools, medical clinics, and fitness centers all close at hand. A rare opportunity to craft a bespoke home in one of Nassau's most desirable enclaves....read more on our website.

Bedrooms: 0

Bathrooms: 0

Lot Size: 15255

Subdivision: West Bay
Street

Features: None

LOT 11 GROVE AVENUE, West
Bay Street, New
Providence/Paradise Island
Phone:



\$350.000 ID# M63837 [View Online](#)
www.sarlesrealty.com