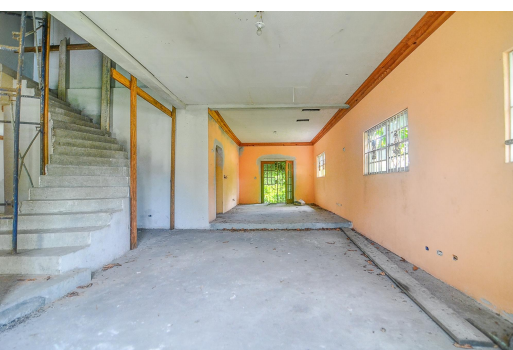


D SUBDIVISION, Boyd Subdivision, New Providence/Paradise



Step into the possibilities with this impressive 4,433 sq.ft. residence, ideally located in a...

Step into the possibilities with this impressive 4,433 sq.ft. residence, ideally located in a quiet, family friendly neighbourhood. Boasting 3 spacious bedrooms and 3 bathrooms, this home offers the perfect blend of space, comfort, and potential. Set on a 6,000 sq.ft. lot, the structure is fully built, with the interior left unfinished, giving you the rare opportunity to personalize the finishes and design to suit your unique style. Whether you envision sleek modern touches or timeless elegance, this property provides the blank canvas to bring your dream home to life....read more on our website.

Bedrooms: 3
Bathrooms: 3
Lot Size: 6000
Subdivision: Boyd
Subdivision
Features: Adult Oriented,
Can Be Rented, Central
location, Easy Access,
Family Oriented, Highway
Access, Low Maint Yard,
Pets Allowed, Phone to
Lot, Private Setting, Quiet
Area, Recreation Nearby,
Road - Paved, Seniors
Oriented, Shopping
Nearby, Unfurnished

30 BOYD SUBDIVISION, Boyd
Subdivision, New
Providence/Paradise Island
Phone:



\$350.000 ID# M63334 [View Online](#)
www.sarlesrealty.com