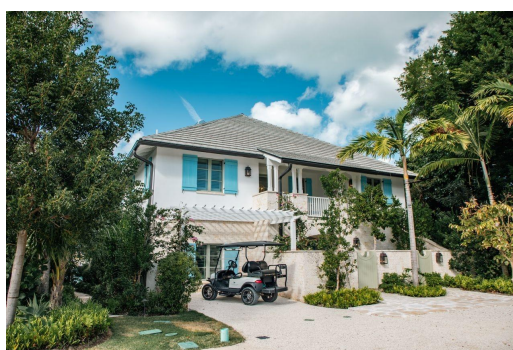


BRILAND CLUB & MARINA, Harbour Island, Eleuther



Introducing the Coral Cottages, an exquisitely curated collection of 2-bedroom, 2.5-bath turnkey...

Introducing the Coral Cottages, an exquisitely curated collection of 2-bedroom, 2.5-bath turnkey waterfront condos. With impeccable attention to detail, breathtaking harbour views, 10ft ceilings and expansive outdoor spaces, these condos pair old-world Harbour Island charm with modern day luxury living. Unit A2-L, positioned on the first floor, features 1,450 sq. ft. of interior living space, enhanced by a sprawling 678 sq. ft. covered terrace and private garden overlooking the harbour. Elegantly furnished with custom touches, sophisticated open concept kitchen and views from every room, Coral Cottages are designed for tranquility and a luxurious lifestyle. Briland Club isnâ€™t just a destination, itâ€™s a homecoming to the essence of island living. Experience where luxury embraces legacy,...read more on our website.

Bedrooms: 2
Bathrooms: 2
Lot Size: 0
Subdivision: Harbour Island
Features: 24 Hour Security, Adult Oriented, Can Be Rented, Central location, Dock, Easy Access, Family Oriented, Fuel to Lot, Furnished, Garden Area, Gated Community, Hillside, Hurricane Windows, Impact Shutters, Impact Windows, Kitchen Built-in(s), Landscaped, Level Lot, Low Maint Yard, Main Level Entry, No Thru Road, Pasture, Pets Allowed, Recreation Nearby, Road - Gravel, Roll Down Shutters, Rural

BRILAND CLUB & MARINA

Setting, Security System,
Seniors Oriented,
Shopping Nearby,
Stand-by Generator,
Swimming Pool, Treed
Lot, Underground
Services, View - Ocean,
Water Purifier, Waterfront
- Ocean, Wheelchair
Access

Island, Eleuthera

BRILAND CLUB &
MARINA, Harbour Island,
Eleuthera
Phone:



\$3.700,000 ID# M63022 [View Online](#)
www.sarlesrealty.com