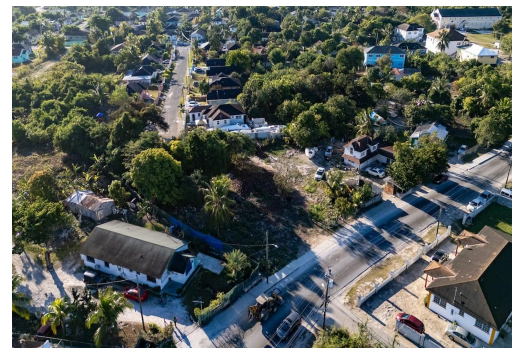
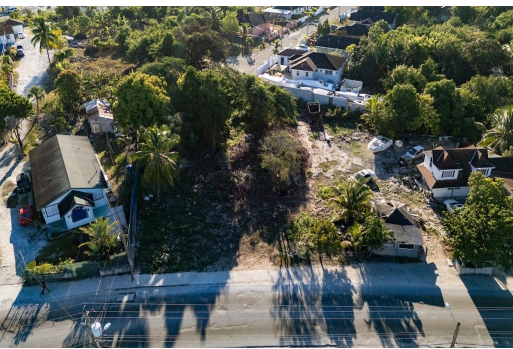
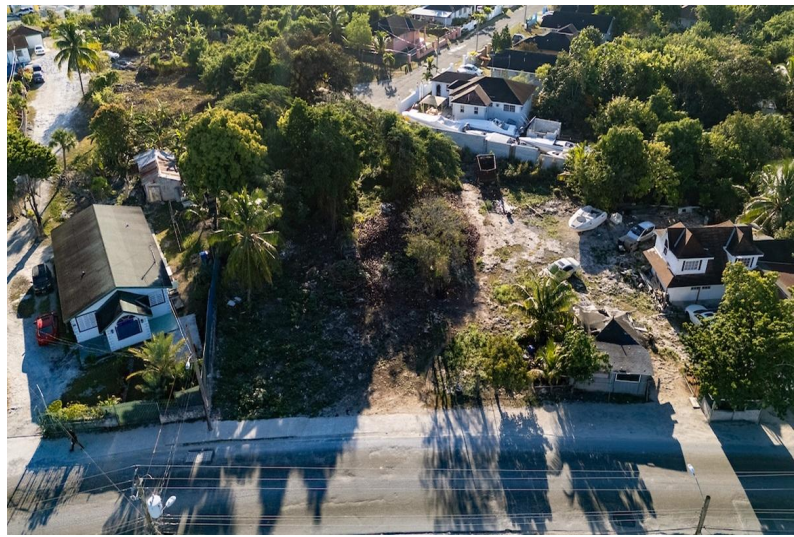
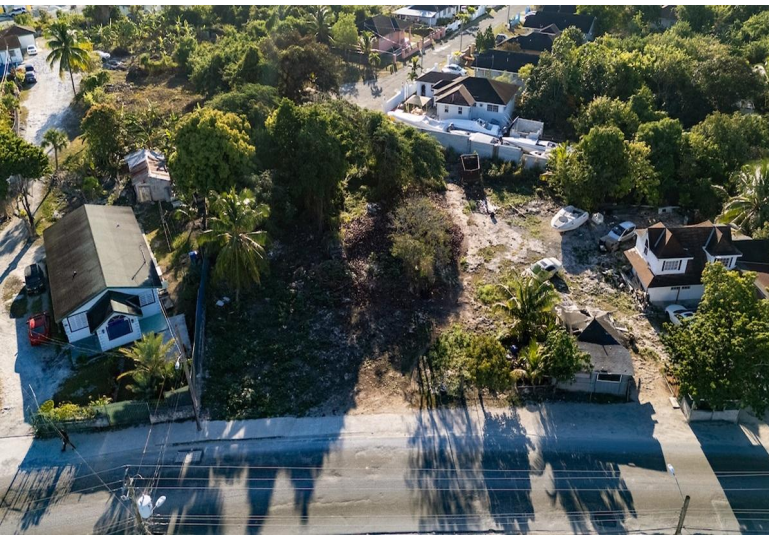


CARMICHAEL VILLAGE, Carmichael Road, New Providence/Paradise Island



This vacant parcel of land, comprising a portion of Lots 1 and 2 within the Carmichael Village...

This vacant parcel of land, comprising a portion of Lots 1 and 2 within the Carmichael Village Allotment, offers a prime opportunity for development in a sought-after area. The lot is ideally located in a tranquil neighborhood, providing a serene environment with easy access to surrounding amenities and main roads. With its generous size, this property offers flexibility for residential or commercial use, making it an excellent investment opportunity. The land is cleared and ready for development, with ample space for a range of potential projects. Whether you're looking to build your dream home or explore commercial ventures, this lot offers the ideal setting to bring your vision to life....read more on our website.

Bedrooms: 0
Bathrooms: 0
Lot Size: 21780
Subdivision: Carmichael Road
Features: Easy Access, Highway Access, None, Road - Paved, Shopping Nearby

CARMICHAEL VILLAGE,
Carmichael Road, New Providence/Paradise Island
Phone:



\$475.000 ID# M61108 [View Online](#)
www.sarlesrealty.com