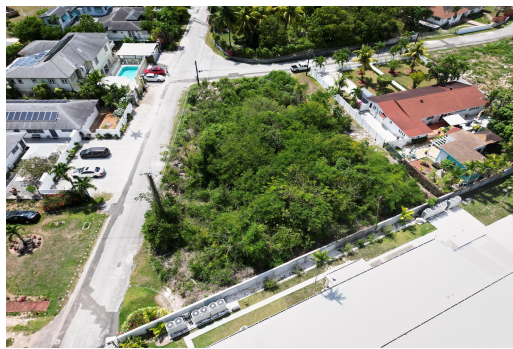


# HIGHLAND PARK LOT #168, West Bay Street, New Providence/Paradise Island



**Discover the perfect canvas for your dream home or investment vision with this generously sized...**

Discover the perfect canvas for your dream home or investment vision with this generously sized lot, ideally situated in one of Nassau's most sought-after neighborhoods—Western New Providence. Whether you're planning to build a forever home or secure a smart investment for your family's future, this location offers unmatched potential. Nestled just moments from the vibrant energy of West Bay Street, you'll enjoy easy access to top-rated schools, popular restaurants, shopping, and beautiful beaches. With ample space to design and build to your heart's content, this property invites creativity and long-term value. Don't miss your chance to own in a thriving, well-connected community that continues to grow in popularity and prestige....read more on our website.

Bedrooms: 0  
Bathrooms: 0  
Lot Size: 18000  
Subdivision: West Bay Street  
Features: None

HIGHLAND PARK LOT #168,  
West Bay Street, New  
Providence/Paradise Island  
Phone:



**\$290,000 ID# M64528** [View Online](#)  
[www.sarlesrealty.com](http://www.sarlesrealty.com)