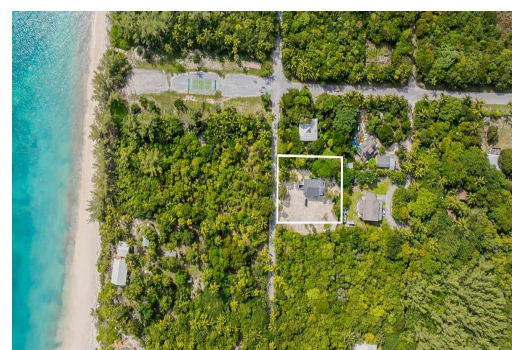


BAHAMA PALM SHORES LOT 20, Bahama Palm Shores, Abaco



Bahama Palm Shores is one of Abaco's hidden gems, offering a rare blend of true remoteness, with...

Bahama Palm Shores is one of Abaco's hidden gems, offering a rare blend of true remoteness, with nearby urban conveniences just 25 minutes away. This area remains predominantly undeveloped, brimming with wildlife and providing an authentic connection to the island's natural charm, which is increasingly complex to find. Properties here promote a lifestyle that emphasises tranquility, natural beauty, and sustainable living, appreciated by its authentic community. Lot 20, Block B, Section 1 spans 19,500 square feet and is located only 500 feet from the development's stunning 8-miles of beachfront. Coastal Dreams is a brand-new 1,850 sq. ft. smart home featuring a chef's kitchen, two spacious bedrooms, and two full bathrooms, along with one half bath. A large upstairs loft offers additional ...read more on our website.

Bedrooms: 2

Bathrooms: 2

Lot Size: 19500

Subdivision: Bahama Palm Shores

Features: Beach Front,
Family Oriented,
Furnished, Pets Allowed,
Private Setting, Quiet
Area, View - Ocean

BAHAMA PALM SHORES LOT
20, Bahama Palm Shores, Abaco
Phone:



\$675.000 ID# M64889 View Online
www.sarlesrealty.com