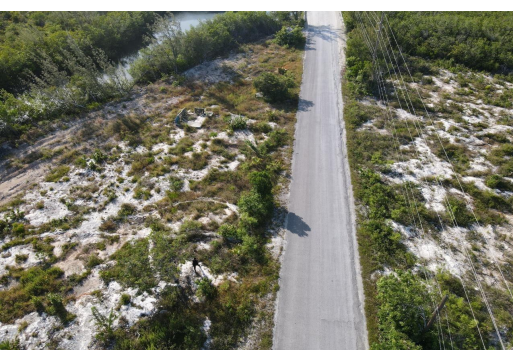
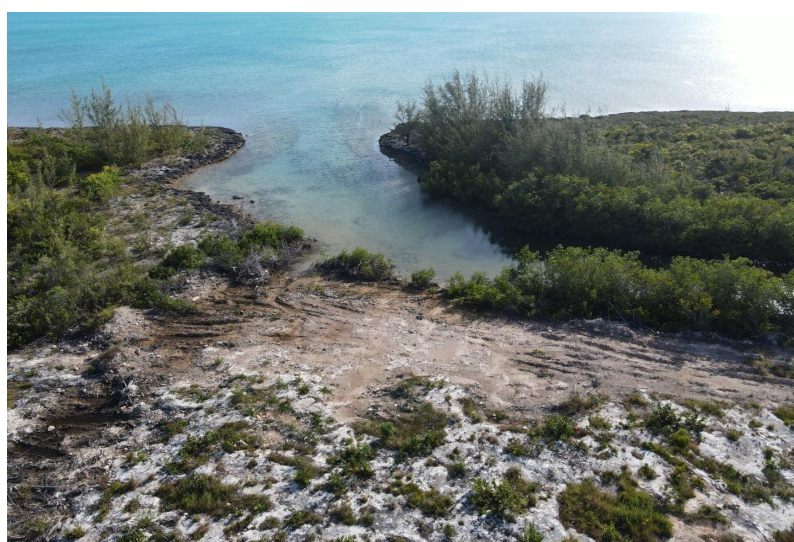
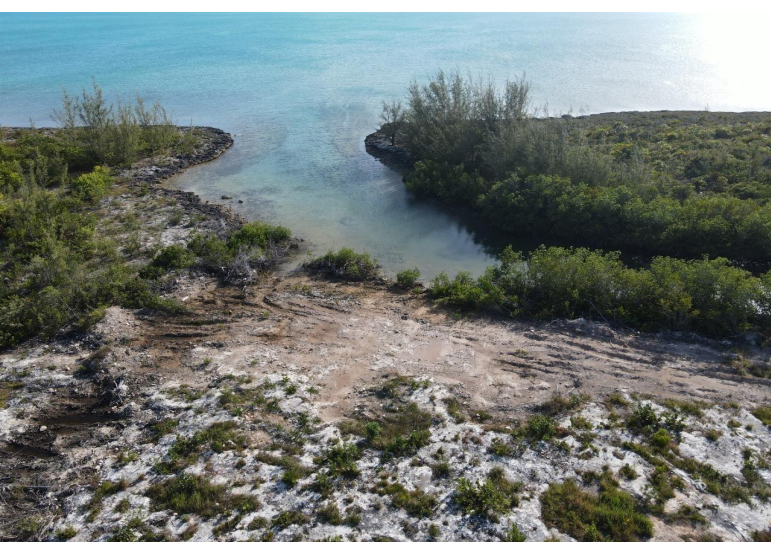


ES DOCTOR'S CREEK, Doctor's Creek, Long Island, Bahamas



This 6-acre waterfront parcel on Long Island, Bahamas, presents a unique opportunity for...

This 6-acre waterfront parcel on Long Island, Bahamas, presents a unique opportunity for agricultural development and marine access. Ideally suited for farming, the land features fertile soil, open space, and direct access to fresh water sources nearbyâ€”perfect for cultivating crops or establishing a self-sustaining farm. With coastal frontage and calm, protected waters, the property also offers an ideal location for a private docking facility or small marina. Whether you're envisioning a farm-to-dock business, eco-resort with sustainable food production, or a private estate with boating access, this land offers both flexibility and functionality. Located in a quiet yet accessible area of the island, you'll enjoy the tranquility of nature with the convenience of nearby settlements, electr...read more on our website.

Bedrooms: 0

Bathrooms: 0

Lot Size: 261360

Subdivision: Doctor's Creek

Features: None

6 ACRES DOCTOR'S CREEK, Doctor's Creek, Long Island
Phone:



\$1,800,000 ID# M64606 [View Online](#)
www.sarlesrealty.com