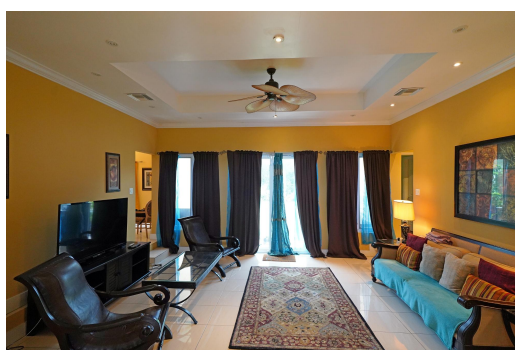


JACARANDA, Western Road, New Providence/Paradise Island



Located in the secure, gated Jacaranda community on the island's western side, this 2,350 sq. ft....

Located in the secure, gated Jacaranda community on the island's western side, this 2,350 sq. ft. home offers 3 bedrooms, 2.5 baths, and an open floor plan with kitchen and dining areas. A charming 340 sq. ft. guest cottage adds flexibility for visitors or extended family. The fully landscaped 10,829 sq. ft. yard features a double-car garage, and the home comes turnkey, move-in ready. Enjoy the convenience of being just 5 minutes from the beach and close to restaurants, the airport, grocery stores, schools, medical facilities, and more - perfect for both full-time living or investment....read more on our website.

Bedrooms: 4

Bathrooms: 4

Lot Size: 10829

Subdivision: Western Road

Features: 24 Hour

Security, Fully Fenced,

Garden Area, Gated

Community, Impact

Windows, Shopping

Nearby

JACARANDA, Western Road,
New Providence/Paradise Island
Phone:



\$725.000 ID# M63833 [View Online](#)
www.sarlesrealty.com