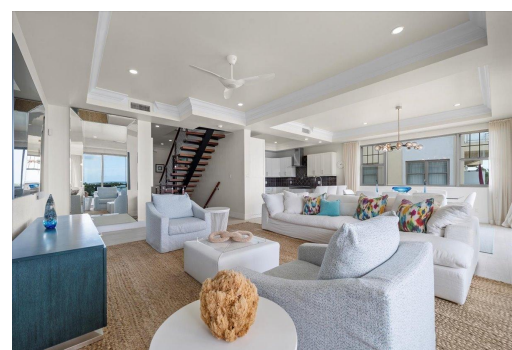
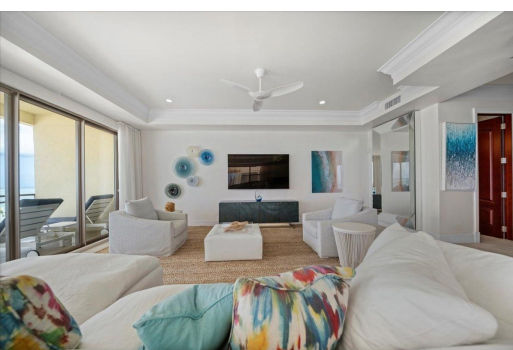


# COLUMBUS COVE, Love Beach, New Providence/Paradise Island



**Set directly on the sands of Love Beach, this rare corner townhouse offers three levels of refined...**

Set directly on the sands of Love Beach, this rare corner townhouse offers three levels of refined oceanfront living in the gated community of Columbus Cove. With 4 bedrooms, 4.5 bathrooms, and a study, the residence features an open-plan living and dining area, a spacious kitchen with stainless steel appliances and island, and large balconies with sweeping ocean views. The master suite includes its own balcony and spa-style bathroom. The ground floor offers a self-contained studio apartment with private entrance—ideal for rental income, guests, or staff—alongside a garage and dedicated staff quarters. Community amenities include 24-hour security, two pools, and a fitness centre, all just minutes from Lynden Pindling International Airport, Old Fort Bay Plaza, King's College, and Lyfo...read more on our website.

Bedrooms: 7  
Bathrooms: 6  
Lot Size: 2500  
Subdivision: Love Beach  
Features: 24 Hour Security, Beach Front, Fully Walled, Furnished, Impact Shutters, Jetted Bathtub, Main Level Entry, Night Security, Roll Down Shutters, Stand-by Generator, Swimming Pool

COLUMBUS COVE, Love Beach,  
New Providence/Paradise Island  
Phone:



**\$2,200,000 ID# M64112 [View Online](#)**  
**[www.sarlesrealty.com](http://www.sarlesrealty.com)**