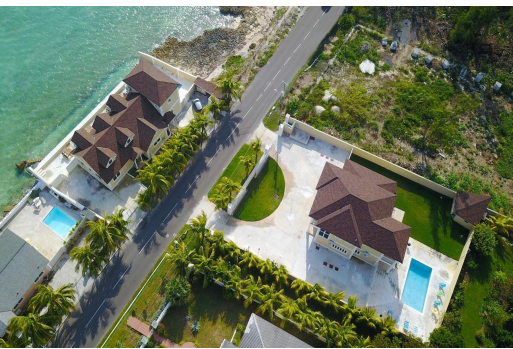


YAMACRAW HILL RD, Yamacraw, New Providence/Paradise



Welcome to this 4,000 sq. ft. rental home on Yamacraw Hill Road, near the prestigious Palm Cay and...

Welcome to this 4,000 sq. ft. rental home on Yamacraw Hill Road, near the prestigious Palm Cay and Port New Providence communities. Designed for both comfort and functionality, this two-storey retreat is perfect for family living. Inside, a bright open living and dining area is tastefully furnished for entertaining. The fully equipped kitchen features generous countertops, ample storage, a breakfast bar, and stainless steel appliances. Five bedrooms each offer en-suite baths, while the primary suite boasts a walk-in closet and private balcony. An in-home washer and dryer adds everyday convenience. Outdoors, the fully walled property includes an automatic gate, ample parking, a spacious yard, swimming pool, and inviting patio—ideal for both relaxation and entertaining. Just steps from the...read more on our website.

Bedrooms: 5
Bathrooms: 5
Lot Size: 26000
Subdivision: Yamacraw
Features: Fully Walled,
Furnished, Garden Area,
Impact Windows,
Swimming Pool

67 YAMACRAW HILL RD,
Yamacraw, New
Providence/Paradise Island

Phone:



\$6,000 ID# M63948 [View Online](#)
www.sarlesrealty.com