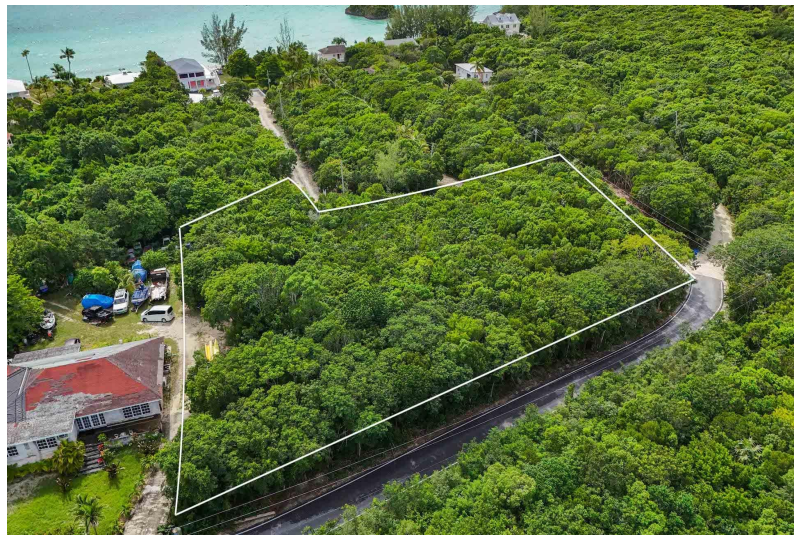
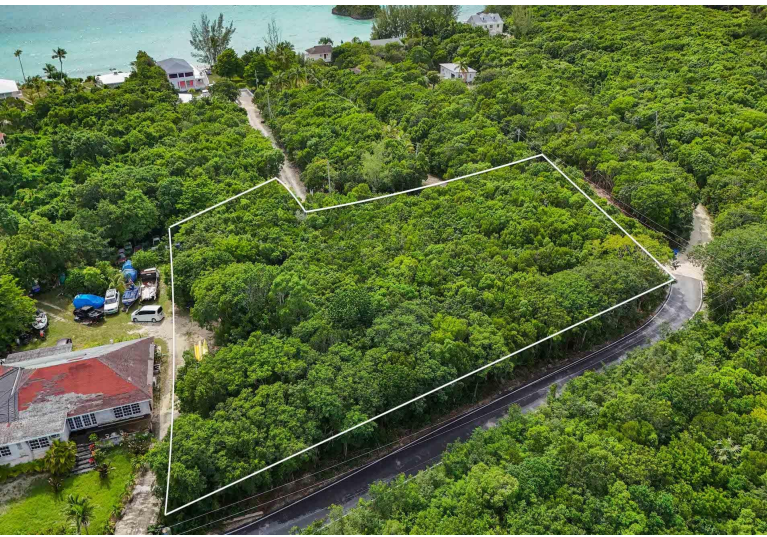


SOUTH PALMETTO POINT, Palmetto Point, Eleuthera



Located in South Palmetto point or as the locals call it, Southpoint. A five minute walk to one of...

Located in South Palmetto point or as the locals call it, Southpoint. A five minute walk to one of the most beautiful beaches on the Caribbean side, near the government dock and parking. About 15 minutes drive to the settlement of Governors Harbor, This 0.49 acre land is located in the beautiful and safe Eleuthera in a quiet and well-developed upscale neighborhood with paved road access. There are three airports on the island, 30 minutes to Governorâ€™s Harbour (GHB), 34 minutes to Rock Sound (RSD) and 90 minutes to North Eleuthera (ELH). Close to city electric and water provisions in a well developed neighborhood. Don't miss this opportunity!...read more on our website.

Bedrooms: 0
Bathrooms: 0
Lot Size: 21344
Subdivision: Palmetto Point
Features: Easy Access, Family Oriented, None, Pets Allowed, Quiet Area, Road - Paved, Treed Lot

SOUTH PALMETTO POINT,
Palmetto Point, Eleuthera
Phone:



\$79,000 ID# M64709 [View Online](#)
www.sarlesrealty.com