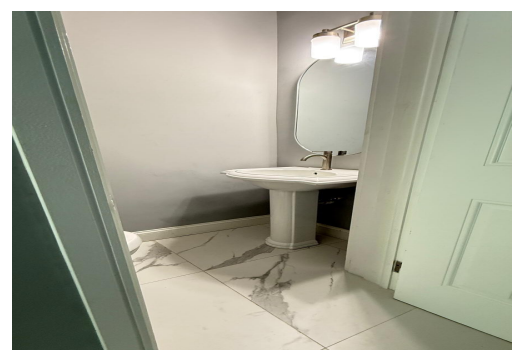
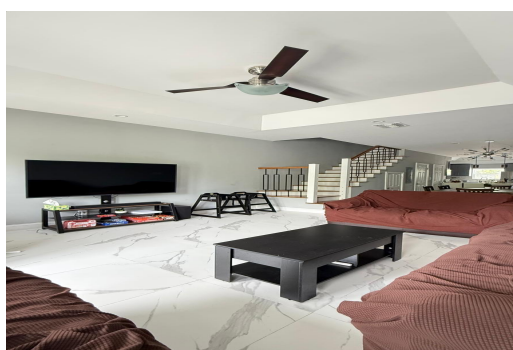


# E DRIVE, VISTA MARIN, Cable Beach, New Providence/Paradise Island



## Newly constructed 3 story, 3 bedroom 3.5 bath unit located directly opposite Saunders Beach. An...

Newly constructed 3 story, 3 bedroom 3.5 bath unit located directly opposite Saunders Beach. An ideal location for a family with kids or couple. The unit is located in an entirely closed secured property with high walls and automatic gates. This spectacular 3-bedroom unit; 3.5 bath offers breathtaking direct views of the ocean from the northern bedroom balconies and windows. The interior space graciously boasts an interior square footage of 1950 sq/ft. The bottom floor houses an up to date kitchen that expands into the dining room into the living room. Off from the living room area, there is a very nice private back patio area. The 2nd level boast 2 bedrooms with en suite full bathrooms. The master bedroom is located on the the top floor, which housed a Jacuzzi tub and separate shower stal...read more on our website.

Bedrooms: 3  
Bathrooms: 4  
Lot Size: 10000  
Subdivision: Cable Beach  
Features: Appliances Only, Central location, Easy Access, Family Oriented, Fuel to Lot, Fully Fenced, Fully Walled, Furnished, Golf Course Nearby, Highway Access, Hot Tub, Hurricane Windows, Jetted Bathtub, Kitchen Built-in(s), Level Lot, Low Maint Yard, Pets Allowed, Phone to Lot, Recreation Nearby, Road - Paved, Security System, Shopping Nearby, Stand-by Generator, Underground Services, View - Ocean

14 MARINE DRIVE, VISTA MARIN, Cable Beach, New Providence/Paradise Island  
Phone:



**\$4.500 ID# M63665** [View Online](#)  
[www.sarlesrealty.com](http://www.sarlesrealty.com)