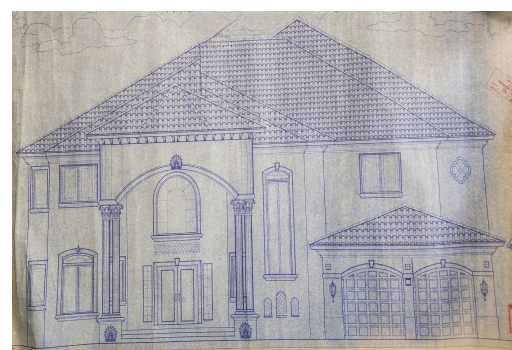
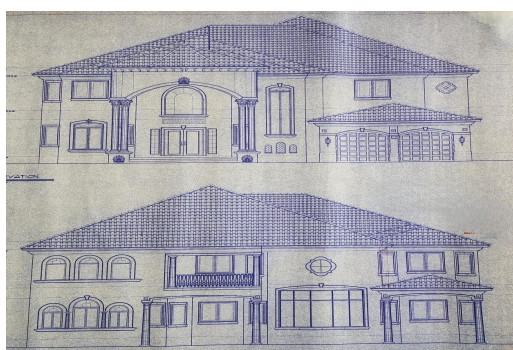
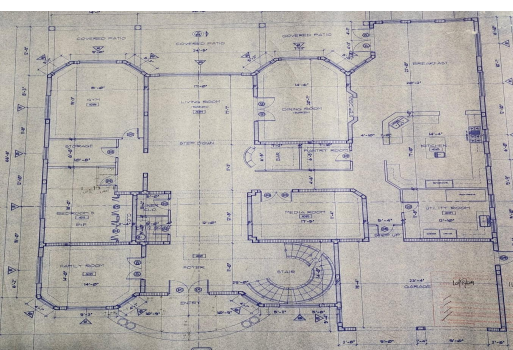
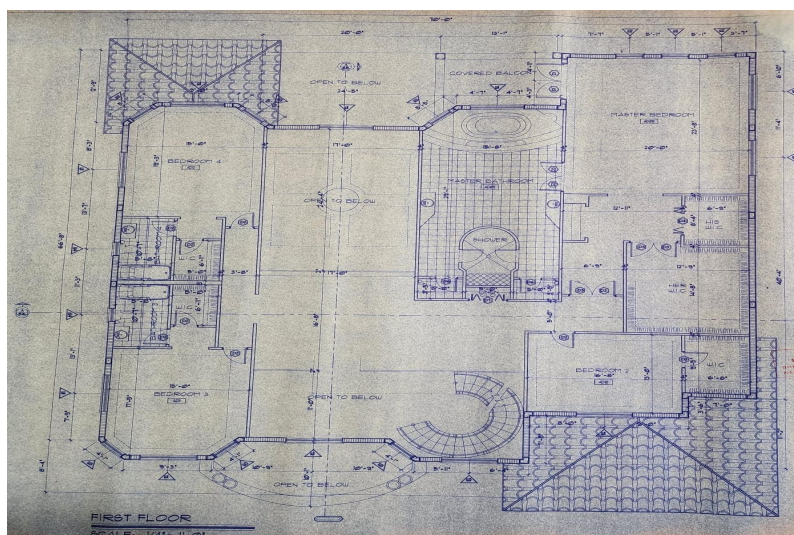
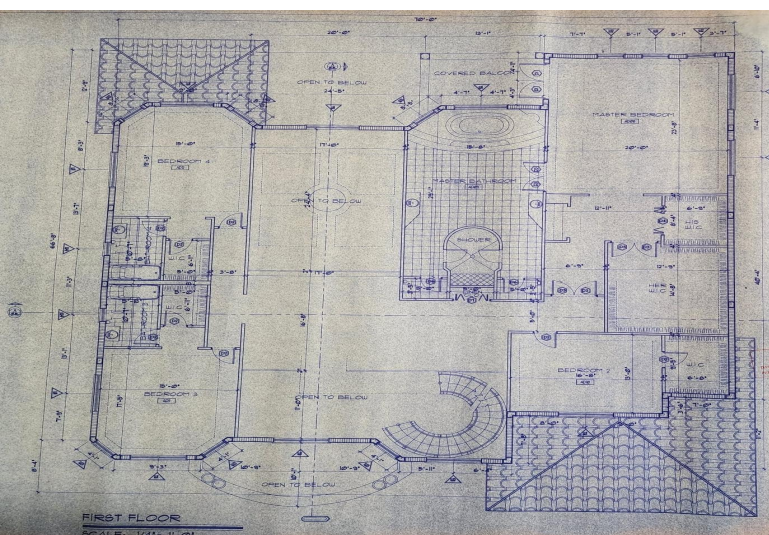


HOPKINS DRIVE CORAL HARBO, Coral Harbour, New Providence/Pa



Rare find! This spacious 90x135 ft lot is a standout in today's market, where parcels of...

Rare find! This spacious 90x135 ft lot is a standout in today's market, where parcels of this size are increasingly scarce. The property includes an existing Ministry of Works-approved foundation, offering a major advantage: not only can the original structure be completed, but the foundation also provides a cost-effective starting point to build your home higher above road level. This added elevation is essential for resilience against flooding, a growing concern with global climate changes. Much of the heavy groundwork has already been done, reducing expenses for a new foundation while giving you peace of mind for the future. The sale also includes approved plans for a modern 5-bedroom, 3.5-bathroom residence featuring a master suite, family room, gym, media room, utility room, bar, ...read more on our website.

Bedrooms: 0
Bathrooms: 0
Lot Size: 12150
Subdivision: Coral Harbour
Features: Adult Oriented,
Easy Access, Family
Oriented, Highway
Access, Level Lot, Low
Maint Yard, Marina
Nearby, None,
Recreation Nearby

HOPKINS DRIVE CORAL
HARBO, Coral Harbour, New
Providence/Paradise Island
Phone:



\$165.000 ID# M64988 [View Online](#)
www.sarlesrealty.com

Ph: (242) 351-9081 | Web: www.sarlesrealty.com