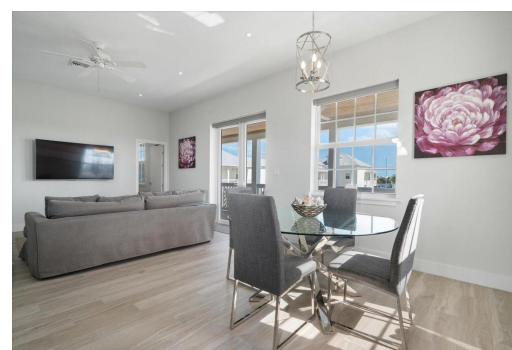
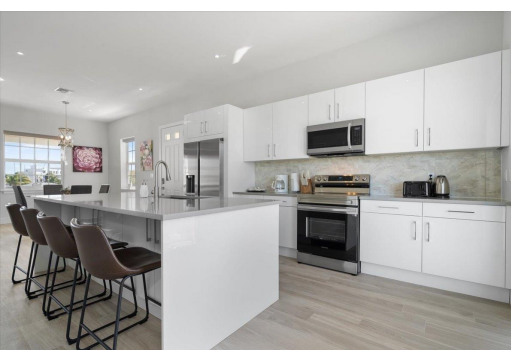


#2 GALLEON BAY, Yamacraw, New Providence/Paradise Island



Welcome to 2 Galleon Bay at Palm Cay, a recently built 3-bedroom, 2.5-bath residence offering...

Welcome to 2 Galleon Bay at Palm Cay, a recently built 3-bedroom, 2.5-bath residence offering direct sunrise views over the award-winning Palm Cay Marina. Positioned within one of Nassau's most sought-after gated beachfront and marina communities, this 1,550 sq. ft. condominium delivers a modern, turnkey living experience with a strong emphasis on quality, comfort, and lifestyle. The open-concept living, dining, and kitchen areas flow naturally onto two private covered terraces, allowing for seamless indoor-outdoor living. The kitchen is thoughtfully designed with Smart Samsung appliances, quartz countertops, a custom backsplash, and an oversized center island with breakfast seating, ideal for both everyday use and entertaining. Interior features include 10-foot ceilings, Smart TVs in all ...read more on our website.

Bedrooms: 3

Bathrooms: 2

Lot Size: 0

Subdivision: Yamacraw

Features: 24 Hour

Security, Adult Oriented,

Can Be Rented, Easy

Access, Family Oriented,

Furnished, Gated

Community, Hurricane

Windows, Impact

Windows, Landscaped,

Marina Nearby, Night

Security, Pets Allowed,

Potential Recreation,

Private Setting, Quiet

Area, Recreation Nearby,

Recreational, Road -

Paved, Seniors Oriented,

Shopping Nearby, Short

Term Allowed, Stand-by

Generator, Underground

Services, View - Ocean

#2 GALLEON BAY, Yamacraw,
New Providence/Paradise Island
Phone:



\$850.000 ID# M65106 [View Online](#)
www.sarlesrealty.com