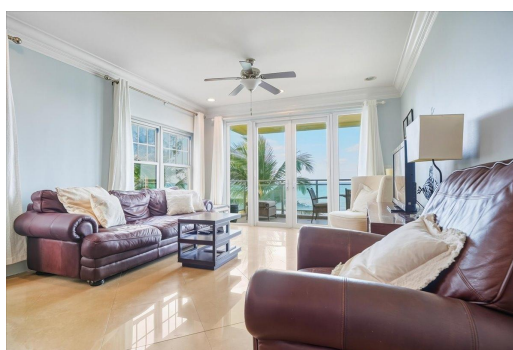


COLUMBUS COVE, Columbus Cove, New Providence/Paradise Island



A rare find amongst the Columbus Cove beachfront townhouses, this unique residence is spread over...

A rare find amongst the Columbus Cove beachfront townhouses, this unique residence is spread over one floor which creates an abundance of open space truly enhancing the livability of this home. Claiming a Northwestern corner position, the ocean views are breathtaking and the sounds of the waves lapping on the seashore are mesmerizing. The residence has (3) bedrooms and (2) bathrooms, an open plan contemporary kitchen leading to living area, and a 2 car garage with automatic remote door. Special features include quality kitchen cabinets, granite countertops, stainless steel appliances, 10' ceilings, 8 foot interior doors with quality polished chrome hardware, and spa like bathroom finishes. Sold fully furnished.....read more on our website.

Bedrooms: 3

Bathrooms: 2

Lot Size: 2200

Subdivision: Columbus Cove

Features: 24 Hour

Security, Cable,

Hurricane Windows, Night

Security, Stand-by

Generator, Swimming

Pool

COLUMBUS COVE, Columbus
Cove, New Providence/Paradise
Island
Phone:



\$885.000 ID# M64439 View Online
www.sarlesrealty.com