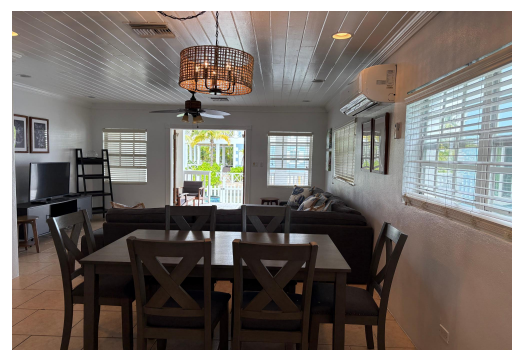


# SANDYPORT DRIVE, West Bay Street, New Providence/Paradise



**Located in the gated, family friendly community of Sandyport, this 2,280 sq.ft canal front townhome...**

Located in the gated, family friendly community of Sandyport, this 2,280 sq.ft canal front townhome offer 3 spacious en-suite bedrooms and a half bath. The master suite spans the entire third floor with a private balcony and water views. Bright, open plan living and dining areas feature double french doors that open onto the canal. Pet Frienly and equipped with a generator. Enjoy full access to community amenities including swimming pools, tennis counts, playgrounds and 24hr security. A private school is within the community and you are just minutes from the grocery stores, restaurants, beaches, Baha Mar Resort and the international airport. Perfect for families or professionals seeking comfort, convenience and waterfront living. Available for view October 15th....read more on our website.

Bedrooms: 3

Bathrooms: 3

Lot Size: 2280

Subdivision: West Bay Street

Features: 24 Hour

Security, Adult Oriented,

Cable, Canal Front,

Central location, Dock,

Easy Access, Family

Oriented, Gated

Community, Impact

Windows, Marina Nearby,

Park setting, Pets

Allowed, Recreation

Nearby, Shopping

Nearby, Stand-by

Generator

SANDYPORT DRIVE, West Bay  
Street, New Providence/Paradise  
Island  
Phone:



**\$6.500 ID# M64145 View Online**  
**www.sarlesrealty.com**