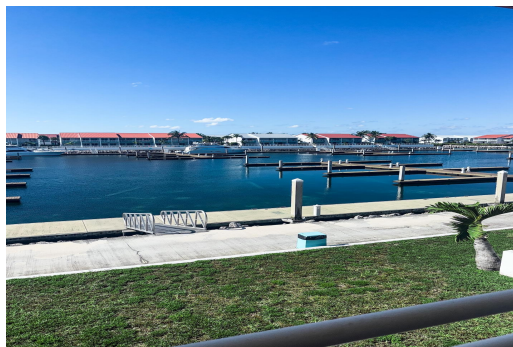


15D BIMINI COVE, South Bimini, Bimini



Unit 15D at Bimini Cove offers the perfect blend of comfort, convenience, and island charm. This...

Unit 15D at Bimini Cove offers the perfect blend of comfort, convenience, and island charm. This spacious 2-bedroom, 3-bath villa—with an additional loft—makes an ideal weekend getaway or long-term retreat. Uniquely positioned in Building 15, the unit overlooks the marina, giving you peaceful water views right from your doorstep. Whether you're looking for a smart rental investment or the perfect second home, this property delivers. Located just moments from pristine beaches and only a short 10-minute drive to the popular Fountain of Youth, you'll have easy access to some of South Bimini's most beloved attractions, restaurants and shopping. The island itself sits just 48 nautical miles from South Florida, making it an easy boat trip or a quick plane ride to paradise. We would love to...read more on our website.

Bedrooms: 3

Bathrooms: 3

Lot Size: 0

Subdivision: South Bimini

Features: Can Be Rented,

Canal Front, Dock,

Marina Nearby,

Recreation Nearby,

Shopping Nearby,

Swimming Pool

15D BIMINI COVE, South Bimini,

Bimini

Phone:



\$385.000 ID# M64788 [View Online](#)
www.sarlesrealty.com