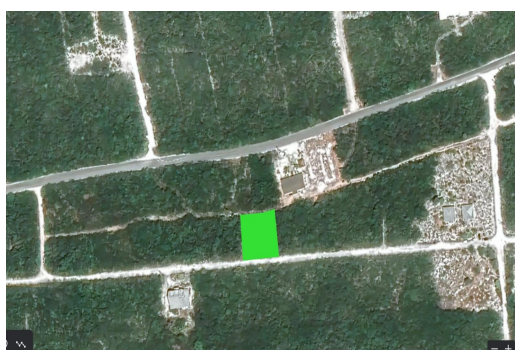
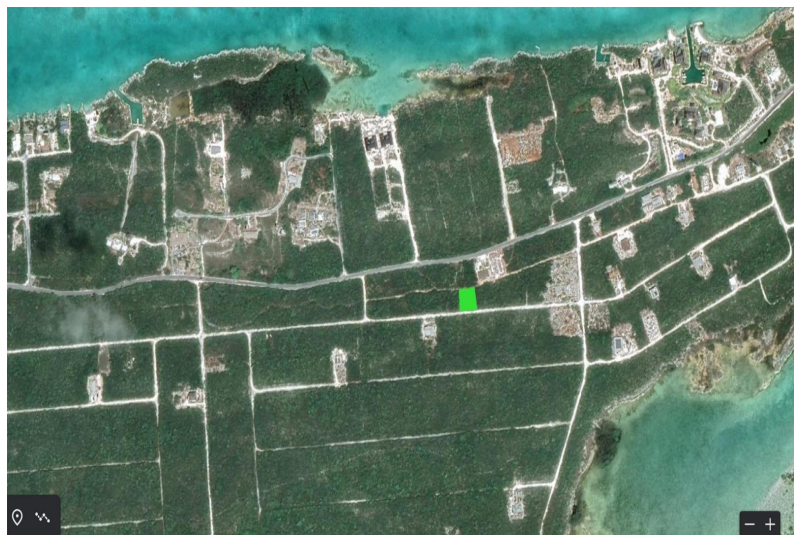
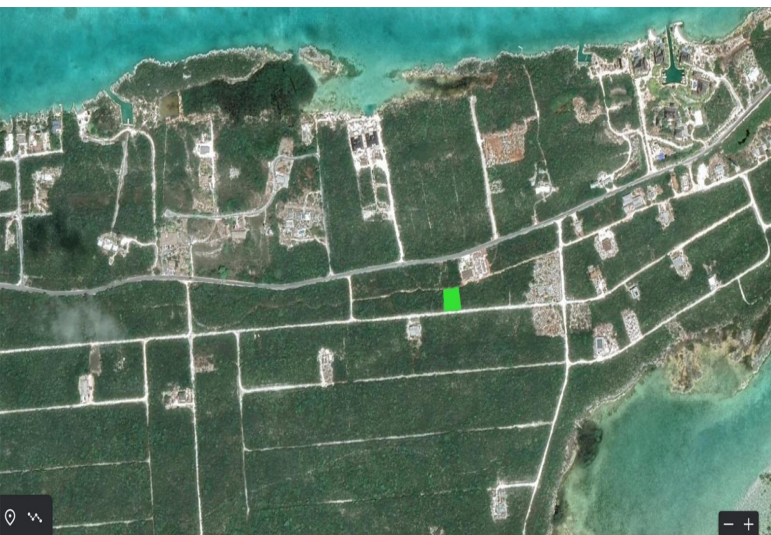


# #8857 JAMAICA DRIVE, Hartswell, Exuma &#038; Exuma



**Experience the beauty of ocean views and the convenience of being just moments from the beach. This...**

Experience the beauty of ocean views and the convenience of being just moments from the beach. This 10,000 sq. ft. homesite in peaceful Hartswell, Exuma offers the ideal setting for a tranquil island lifestyle. Build upwards to capture sweeping vistas of Moriah Harbour Cay National Park and the leeward side of Great Exuma. This area is known for its calm, laid-back atmosphere, perfect for those seeking serenity and privacy. Essential amenities—including grocery stores, restaurants, and pharmacies—are all within easy reach, with quick access to Queen’s Highway for effortless travel. Access to electricity. Located close to the breathtaking Moriah Harbour Cay National Park, this property is an exceptional opportunity to create your own Exuma retreat....read more on our website.

Bedrooms: 0

Bathrooms: 0

Lot Size: 10000

Subdivision: Hartswell

Features: None

Lot #8857 JAMAICA DRIVE,  
Hartswell, Exuma &#038; Exuma  
Cays  
Phone:



**\$37,000 ID# M64910** [View Online](#)  
[www.sarlesrealty.com](http://www.sarlesrealty.com)