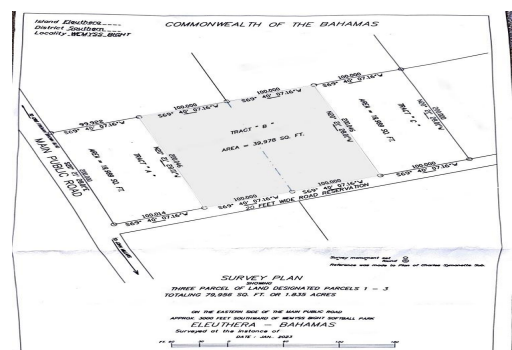
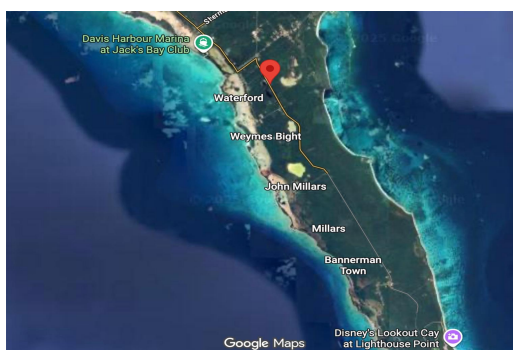
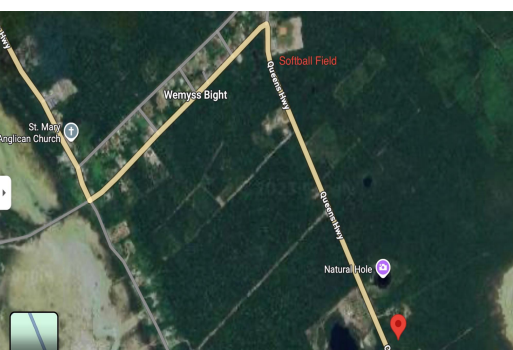


TRACT B, WEMYSS BIGHT, Wemyss Bight, Eleuthera



Prime opportunity to own the entire Tract "B" totaling 39,978 sq. ft., in the quiet...

Prime opportunity to own the entire Tract "B" totaling 39,978 sq. ft., in the quiet community of Wemyss Bight, Eleuthera. With Open Zoning, this expansive parcel offers flexibility for a private residence, vacation rental, or long-term investment. Ideally located approximately 4 miles from Lighthouse Beach and the new Disney Lookout Cay, the property sits along Queen's Highway, about 3,000 ft southwest of the Wemyss Bight softball park. Positioned on the left (southeast) side of the road, it includes a 20 ft. road reservation for convenient access. With its generous size, prime location, and proximity to major developments, this tract is an excellent opportunity in Eleuthera's growing southern corridor....read more on our website.

Bedrooms: 0
Bathrooms: 0
Lot Size: 39978
Subdivision: Wemyss Bight
Features: None

TRACT B, WEMYSS BIGHT,
Wemyss Bight, Eleuthera
Phone:



\$60,000 ID# M64934 [View Online](#)
www.sarlesrealty.com