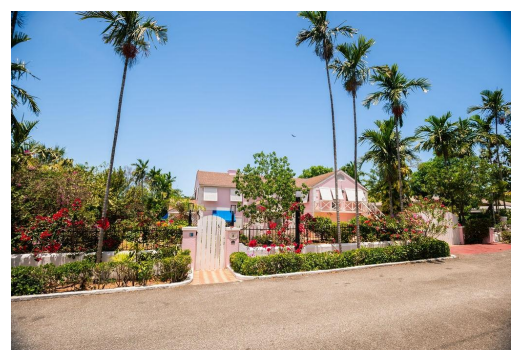


# NSET DRIVE, West Bay Street, New Providence/Paradise Isl



## **This home nestled in the prestigious community of Grove West, Vista Marina one of Nassau hidden...**

This home nestled in the prestigious community of Grove West, Vista Marina one of Nassau hidden gems with 6 Bedrooms, 5 bathrooms and a living area of 4,563 sq ft sits on a 13,674 sq ft Property in one of the most sought after neighborhood this beautifully renovated Bahamian home seamlessly blends timeless elegance with modern European touches. Ideally located just minutes from Baha Mar, Goldwynn, Goodmans Bay, and downtown Nassau, it offers both privacy and convenience, making it perfect for professionals and families alike. Property Highlights: European Craftsmanship: The home features 44 European imported tilt and turn aluminum windows and matching exterior aluminum doors, offering superior insulation, security, and style. Luxury Flooring: Porcelain tile graces the lower level, while th...read more on our website.

Bedrooms: 5  
Bathrooms: 6  
Lot Size: 13674  
Subdivision: West Bay Street  
Features: Cable, Can Be Rented, Easy Access, Family Oriented, Fully Fenced, Fully Walled, Furnished, Garden Area, Golf Course Nearby, Guest House, Hurricane Windows, Impact Windows, Kitchen Built-in(s), Landscaped, Main Level Entry, Marina Nearby, Pets Allowed, Private Setting, Quiet Area, Recreation Nearby, Road - Paved, Security System, Shopping Nearby, Stand-by Generator, Treed Lot,

# SUNSET DRIVE, West Bay Street, New Providence/Paradise Isl

SUNSET DRIVE, West Bay  
Street, New Providence/Paradise  
Island  
Phone:



**\$1.250,000 ID# M64926** [View Online](#)  
**[www.sarlesrealty.com](http://www.sarlesrealty.com)**