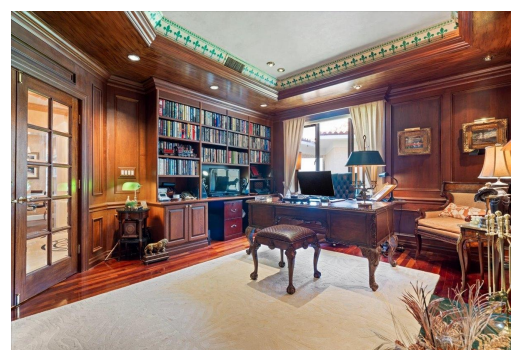
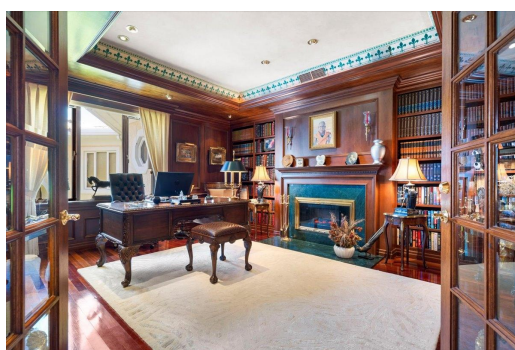


# CLOISTER DRIVE EAST, Paradise Island, New Providence/Paradis



**This rare, two-story luxury penthouse has been fully renovated to the highest standards and...**

This rare, two-story luxury penthouse has been fully renovated to the highest standards and meticulously maintained. The expansive residence is beautifully appointed with hand made furniture ordered by the owner's and is offered fully furnished, turnkey, and ready for refined living. The expansive home covers over 3,100sqft of interior area with another 250sqft balcony with ocean views. The home features 3 en-suite bedrooms, a large study, and a multipurpose entertaining area with a bar and pool table. Marble floors, hand painted decorative ceilings and trims, custom furniture and millwork, upgraded lighting, outdoor kitchen & bbq, and top-of-the-line AV equipment are just a few of the many notable upgrades done to and included with the unit. The sale includes a car, a golf cart, 2 cover...read more on our website.

Bedrooms: 3  
Bathrooms: 4  
Lot Size: 3350  
Subdivision: Paradise Island  
Features: 24 Hour Security, Fully Walled, Furnished, Hurricane Windows, Impact Shutters, Main Level Entry, Night Security, Stand-by Generator, Swimming Pool

CLOISTER DRIVE EAST,  
Paradise Island, New  
Providence/Paradise Island  
Phone:



**\$2.795,000 ID# M62395 [View Online](#)**  
**[www.sarlesrealty.com](http://www.sarlesrealty.com)**