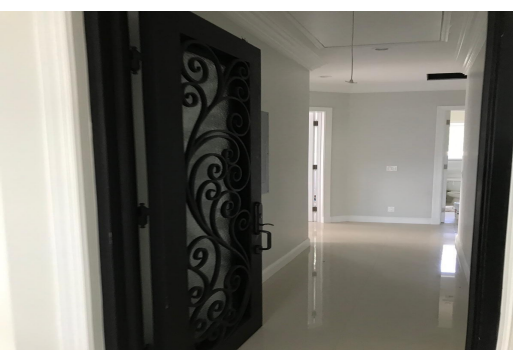


WINTON MEADOWS, Winton, New Providence/Paradise Island



This beautifully maintained 4-bedroom, 3-bath home offers 2,600 sq. ft. of refined living space on...

This beautifully maintained 4-bedroom, 3-bath home offers 2,600 sq. ft. of refined living space on an 8,000 sq. ft. lot. It combines timeless craftsmanship with modern upgrades. High ceilings, crown molding, recessed lighting and detailed casework enhance the open, airy interior. The kitchen is a standout with custom wood cabinetry, quartz countertops, and a central island. Bathrooms feature frameless glass showers and custom vanities, while the primary suite boasts a soaking tub and a cedar-lined walk-in closet with built-ins. Comfort is assured with 3 central a/c plus three ductless systems, spray foamed walls and roof rafters, and impact-resistant windows and doors. Outdoor living shines with a welcoming front porch and a 750 sq. ft. covered patio/cabana, perfect for entertaining. A conc...read more on our website.

Bedrooms: 4

Bathrooms: 3

Lot Size: 8000

Subdivision: Winton

Features: Family Oriented,

Fully Fenced, Garden

Area, Hurricane Windows,

Kitchen Built-in(s), Low

Maint Yard, Private

Setting, Road - Paved,

Shopping Nearby,

Stand-by Generator,

Unfurnished, Water

Softener

23 WINTON MEADOWS, Winton,

New Providence/Paradise Island

Phone:



\$770.000 ID# M65020 View Online
www.sarlesrealty.com