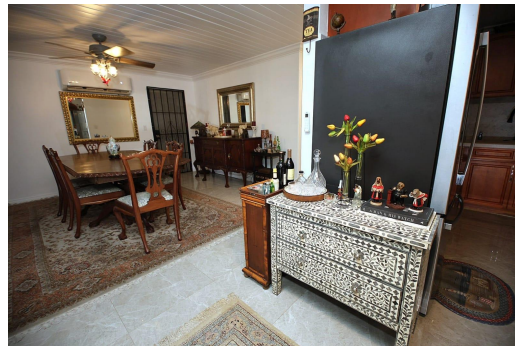


# 150 CHURCHILL AVENUE, Chippingham, New Providence/Paradise



## Discover a home that blends comfort, style, and modern convenience. This 3-bedroom, 3.5-bath...

Discover a home that blends comfort, style, and modern convenience. This 3-bedroom, 3.5-bath residence features fully tiled interiors, a sleek kitchen with full-sized appliances, and inviting spaces designed for relaxation. Unwind in the covered indoor pool and sauna that open to a private patio, or stay active in the outdoor exercise area. Hurricane impact windows, a full security system, and gated parking for 2-3 cars provide peace of mind. Partially furnished with select inventory available, this property offers a rare mix of tranquility, security, and modern living—an absolute must-see....read more on our website.

Bedrooms: 3  
Bathrooms: 3  
Lot Size: 6000  
Subdivision: Chippingham  
Features: Cable, Central location, Easy Access, Family Oriented, Fully Fenced, Garden Area, Highway Access, Hurricane Windows, Impact Windows, Kitchen Built-in(s), Landscaped, Level Lot, Low Maint Yard, Main Level Entry, Partially Furnished, Pets Allowed, Phone to Lot, Private Setting, Quiet Area, Recreation Nearby, Road - Paved, Shopping Nearby, Stand-by Generator, Treed Lot

150 CHURCHILL AVENUE,  
Chippingham, New  
Providence/Paradise Island  
Phone:



**\$450,000 ID# M65033** [View Online](#)  
[www.sarlesrealty.com](http://www.sarlesrealty.com)