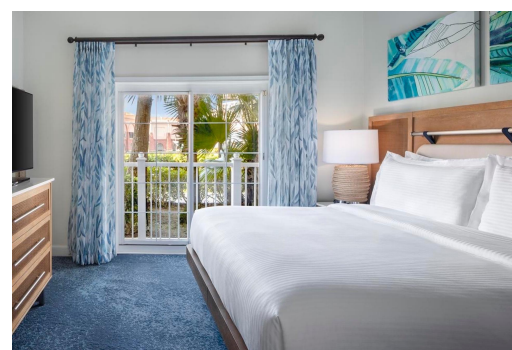
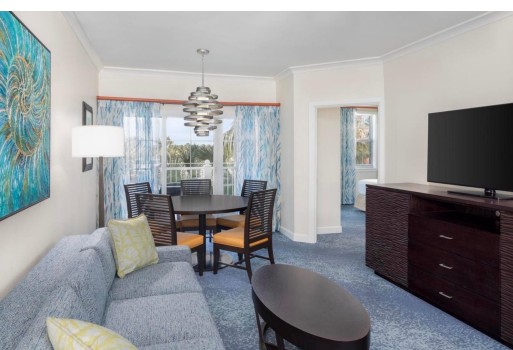


HARBORSIDE MARINA, PI, Paradise Island, New Providence/Paradise Island



Discover unparalleled flexibility and comfort with this beautifully appointed two-bedroom lock-off...

Discover unparalleled flexibility and comfort with this beautifully appointed two-bedroom lock-off villa (timeshare) at Harbourside at Atlantis. This floating Gold Status unit offers premium usage during peak season and gives owners the freedom to enjoy up to 14 days per year in one of Paradise Island's most sought-after vacation destinations. Owners enjoy access to Atlantis Resort amenities, including world-class dining, spectacular pools, Aquaventure Water Park, Marina Village, and pristine beaches....read more on our website.

Bedrooms: 2
Bathrooms: 2
Lot Size: 6708240
Subdivision: Paradise Island
Features: 24 Hour Security, Acreage, Furnished, Landscaped, Quiet Area, Recreation Nearby, Road - Paved, Shopping Nearby, View - Ocean, Waterfront - Ocean

HARBORSIDE MARINA, PI,
Paradise Island, New
Providence/Paradise Island
Phone:



\$35,000 ID# M65034 [View Online](#)
www.sarlesrealty.com