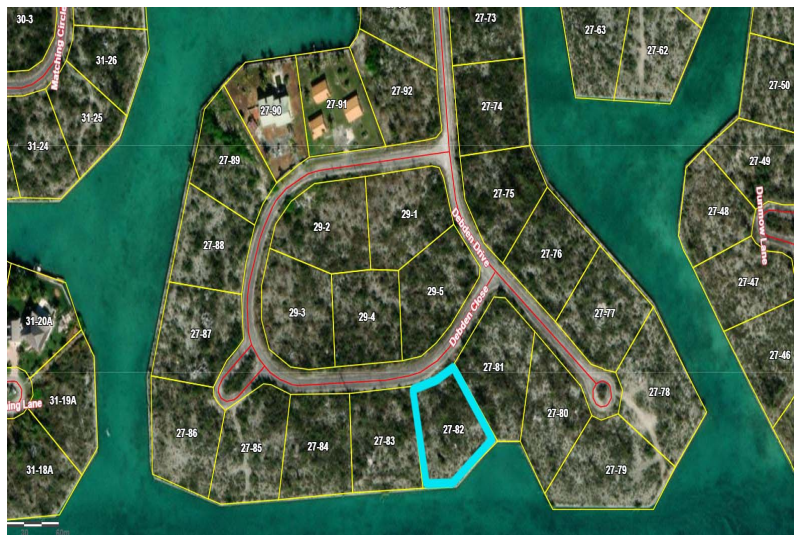
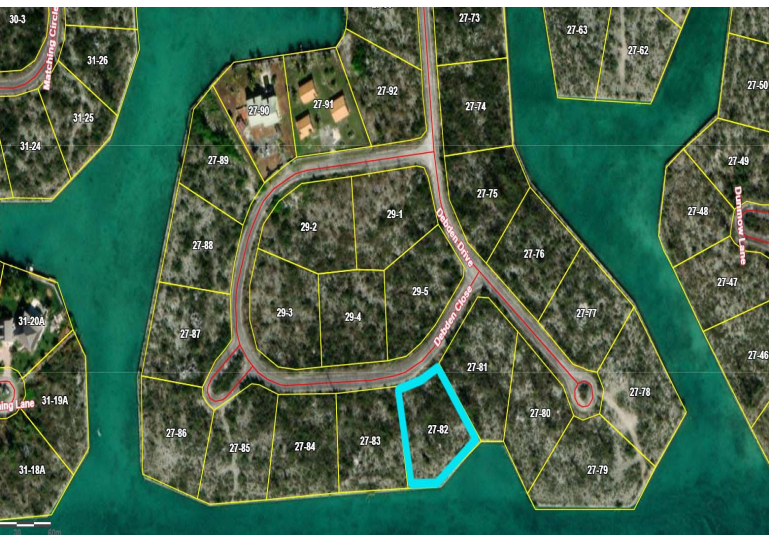


Prime Waterfront Lot in Caravelle Bay



Discover an exceptional investment opportunity in the exclusive Caravelle Bay Subdivision, ideally...

Discover an exceptional investment opportunity in the exclusive Caravelle Bay Subdivision, ideally positioned on Debden Close. This expansive 37,096 sq. ft. lot boasts an impressive 237 feet of canal frontage directly on the Grand Lucayan Waterway, offering breathtaking views and endless potential for luxury waterfront living or development.

With 123 feet of street frontage and zoning for Multifamily High-Rise, this property is perfectly suited for an upscale condominium, townhouse complex, or private residential estate. The serene canal access provides convenient boating to the ocean while maintaining a peaceful neighborhood atmosphere.

Key Features:

Prime location in Caravelle Bay Subdivision
237 ft. of water fr...read more on our website.

Lot Size: 0.85
Living Area: 37,096
Subdivision: Caravelle Bay
Features: Canal Front,
Road - Paved



Denise Smith

Phone:

denisevsmith08@gmail.com



\$139,000 ID# 1070344 [View Online](#)
www.sarlesrealty.com