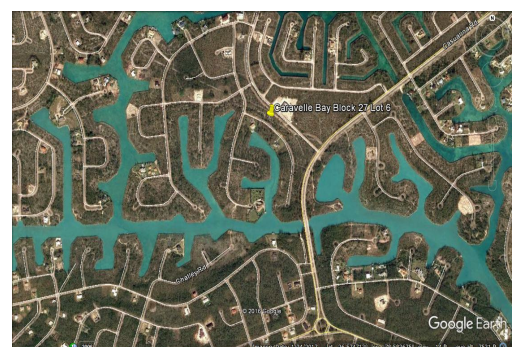
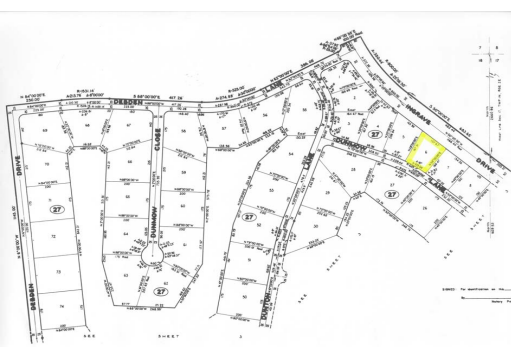
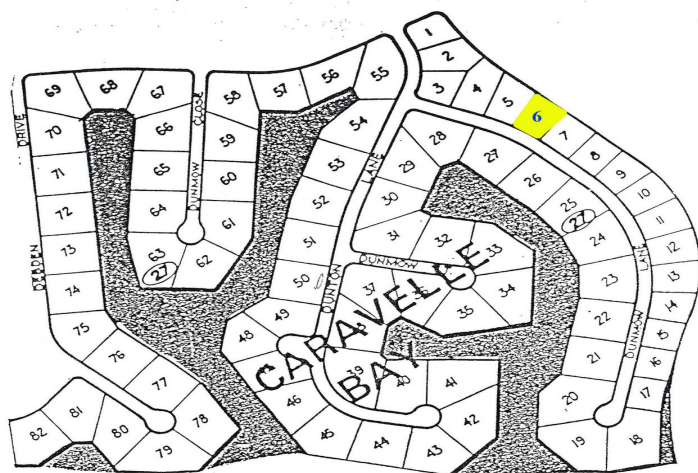
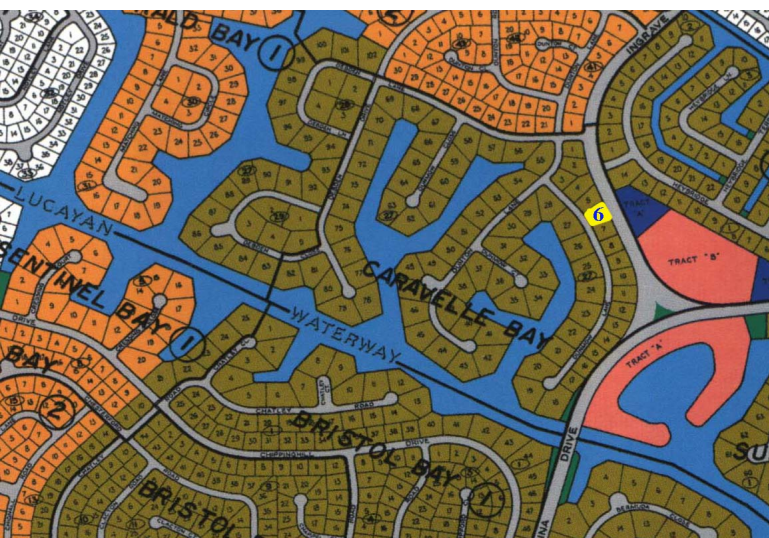


JUST REDUCED!! Lot In Caravelle Bay



Affordable Multi-family Lot In Caravelle Bay

JUST REDUCED!!!! Interior Multifamily lot on Grand Bahama Island located in the popular Caravelle Bay Subdivision. This lot is situated in Caravelle Bay on Dunmow Lane just a over the Casuarina Bridge. This property measured just under an half acre at 19,260 square feet.

This property has great potential and would make a sound investment. Ideal for large multi family complex or a very large single family estate this property would make a Great Buy!

The area is no more than a fifteen minute drive to downtown Freeport, the Grand Bahama International airport and other amenities.

...read more on our website.

Lot Size: 19,260 sq ft or
0.45 Acre
Maint. Fees: 200 Annually
Subdivision: Caravelle Bay



Tiffany Smith

Phone: (242) 351-9081

kekris4@gmail.com



\$15,000 ID# 28804 [View Online](#)
www.sarlesrealty.com

Ph: (242) 351-9081 | Web: www.sarlesrealty.com