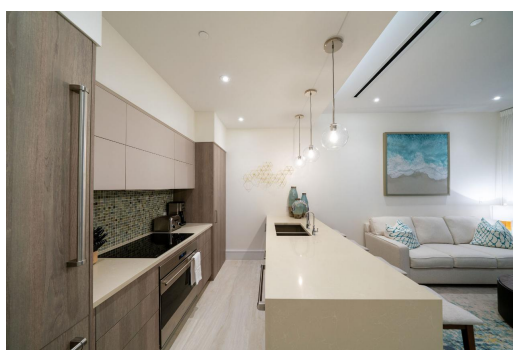


STERLING COMMONS, Paradise Island, New Providence/Paradise



Experience elevated island living with panoramic views of the world-class Hurricane Hole Superyacht...

Experience elevated island living with panoramic views of the world-class Hurricane Hole Superyacht Marina and sparkling Nassau Harbour from this sophisticated 1-bedroom, 1-bathroom residence at Sterling Commons, Paradise Landing. Located on the coveted 3rd floor, this contemporary retreat blends modern elegance with Caribbean charm. The open-concept layout features premium appliances, sleek quartz countertops, central air conditioning, and a spacious private balcony—perfect for taking in breathtaking sunsets. Ownership includes a 50-foot dock slip at Hurricane Hole Superyacht Marina, offering direct access to premier boating and yachting in The Bahamas. Investors will also appreciate the potential for lucrative rental income and exclusive tax advantages. Sterling Commons places you step...read more on our website.

Bedrooms: 1

Bathrooms: 1

Lot Size: 47916

Subdivision: Paradise Island

STERLING COMMONS, Paradise Island, New Providence/Paradise Island

Features: Can Be Rented, Family Oriented, Furnished, Gated Community, Harbour, Landscaped, Main Level Entry, Marina Nearby, Quiet Area, Recreation Nearby, Road - Paved, Shopping Nearby, Swimming Pool, View - Ocean

Island Phone:



\$1.750,000 ID# M63624 [View Online](#)
www.sarlesrealty.com