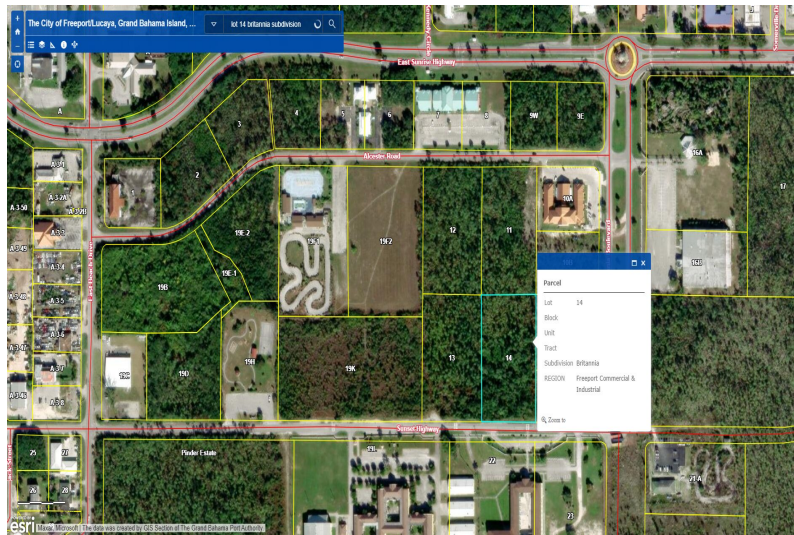
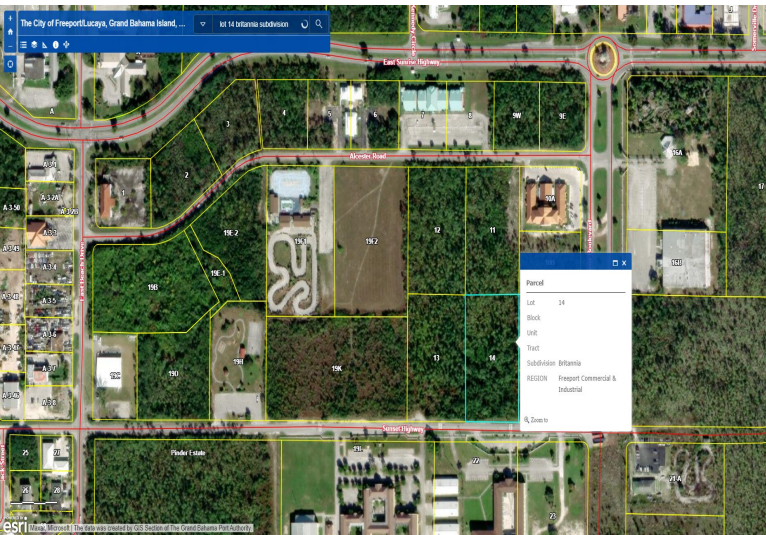


# Commercial Vacant Land &#8211; 14 Sunset Highway



**This property is zoned tourist commercial and is located in Central Freeport, opposite the Sister...**

This property is zoned tourist commercial and is located in Central Freeport, opposite the Sister Mary Patricia Russell School. This location has excellent road access to downtown Freeport, the airport, harbour, and both the West and East ends. The lot is just over 2 acres in a rectangular shape, measuring 246 feet of frontage on Sunset Highway and over 396 feet deep. The lot is level and has not been cleared of its natural vegetation of pine and shrubbery typical to Freeport. The Tourist Commercial zoning allows for a broad range of uses for the property. The seller is motivated, and with the recent announcements of major investments in Grand Bahama, now is the time to take advantage of this great opportunity.

...read more on our website.

Lot Size: 97,923

Living Area: 2.248

Features: Highway Access



Doncar Real Estate Team Don  
and Carmel Churchill

Phone:

don@doncarmanagement.com



**\$399,000 ID# 1070269** [View Online](#)  
[www.sarlesrealty.com](http://www.sarlesrealty.com)