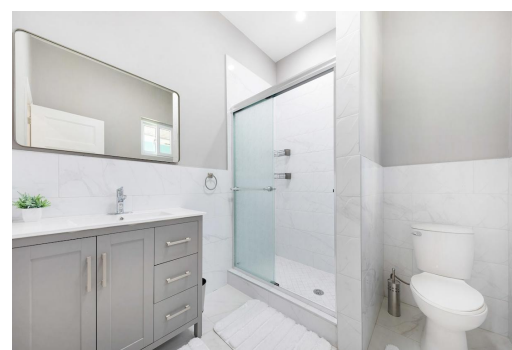


# DRIVE HIGH POINT, West Bay Street, New Providence/Paradise Island



## Welcome to this spacious 2-bedroom, 1-bathroom home located at Lot 20 Concord Drive in the...

Welcome to this spacious 2-bedroom, 1-bathroom home located at Lot 20 Concord Drive in the desirable, gated High Point community. Offering approximately 918 sq ft of living space, this home provides comfort and functionality for individuals, couples, or small families. Residents of High Point enjoy exclusive access to community amenities including a sparkling swimming pool, tennis court, and beautifully maintained common areas perfect for relaxation and recreation. Enjoy the added convenience of water being included in the rent, along with the peace and quiet of a friendly, secure neighborhood. With two full bathrooms and an open living area, this rental offers a practical and comfortable living experience. Don't miss your chance to call this charming property home. Contact us today to s...read more on our website.

Bedrooms: 2

Bathrooms: 2

Lot Size: 8078

Subdivision: West Bay Street

Features: Can Be Rented, Family Oriented, Gated Community, Highway Access, Landscaped, Quiet Area, Road - Paved, Swimming Pool

CONCORD DRIVE HIGH POINT,  
West Bay Street, New  
Providence/Paradise Island  
Phone:



**\$3.300 ID# M63552** [View Online](#)  
[www.sarlesrealty.com](http://www.sarlesrealty.com)