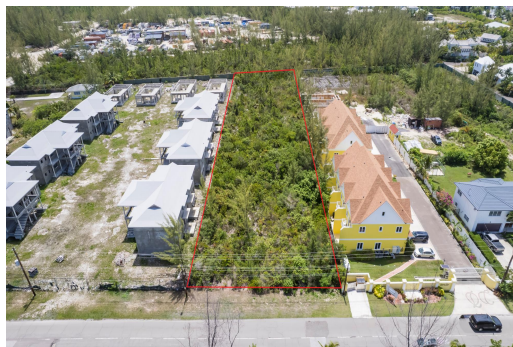


TH OCEAN ROAD, South Ocean, New Providence/Paradise



Positioned in one of Nassau's most sought-after growth corridors, this expansive multifamily lot...

Positioned in one of Nassau's most sought-after growth corridors, this expansive multifamily lot offers a rare opportunity to create a prestigious development or secure a long-term income-generating asset. Its prime location places you within an easy stroll to the exclusive Albany community and just minutes from Fresh Market, Old Fort Town Centre, fine dining, and other premier amenities. With the area experiencing rapid appreciation, this property combines both lifestyle and investment potential at its finest....read more on our website.

Bedrooms: 0

Bathrooms: 0

Lot Size: 42253

Subdivision: South Ocean

Features: Acreage, Golf

Course Nearby, Marina

Nearby, None, Quiet

Area, Recreation Nearby,

Shopping Nearby

SOUTH OCEAN ROAD, South

Ocean, New Providence/Paradise

Island

Phone:



\$850.000 ID# M63563 [View Online](#)
www.sarlesrealty.com