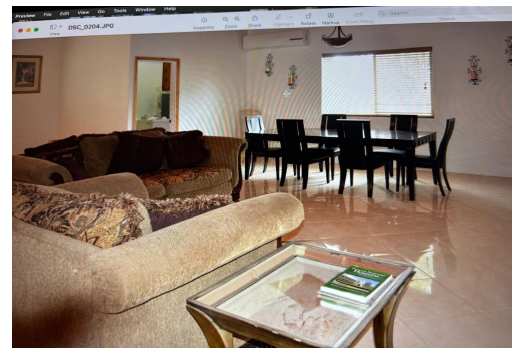


WESTRIDGE ESTS., Westridge, New Providence/Paradise Island



This 3 bedroom 3 bathroom two storey house is located in the highly sought after community of...

This 3 bedroom 3 bathroom two storey house is located in the highly sought after community of Westridge Estates in the western district of New Providence. The house comes fully furnished with an open floor plan of the living and dining areas and opens up to a spacious kitchen which features stainless steel appliances, granite counter tops and maple wood cabinets. The master suite is located on this level with the other two ensuite bedrooms located on the second floor. There is also a fully equipped laundry room. Amenities include 12 foot ceilings, 18 inch porcelain tiles throughout, ceiling fans in all of the rooms, ductless and central a/c units, hurricane impact windows and a spacious garden....read more on our website.

Bedrooms: 3

Bathrooms: 3

Lot Size: 0

Subdivision: Westridge

Features: Furnished,

Garden Area, Impact

Windows, Main Level

Entry

WESTRIDGE ESTS., Westridge,

New Providence/Paradise Island

Phone:



\$3.800 ID# M63580 [View Online](#)
www.sarlesrealty.com