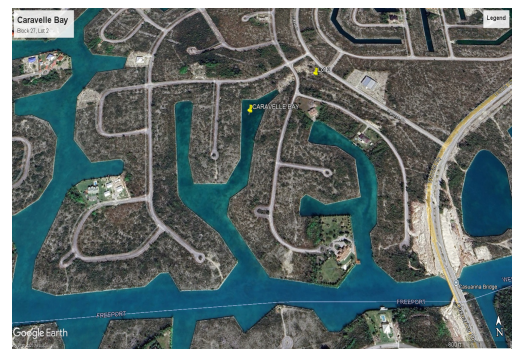
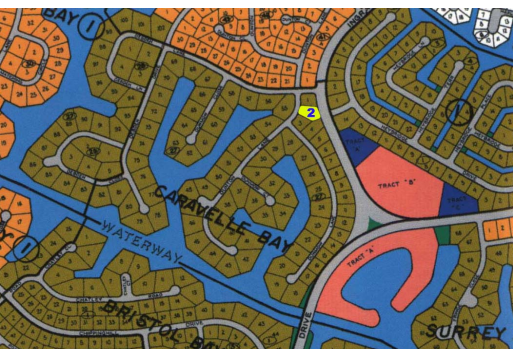


# Caravelle Bay Listing



## Development Opportunity in Caravelle Bay Landlocked Multi Family Lot Lot runs from Dunton Lane to...

Development Opportunity in Caravelle Bay Landlocked Multi Family Lot Lot runs from Dunton Lane to Ingrave Drive, this 23,500 sq. ft. (0.54 acre) lot in Caravelle Bay presents a prime opportunity for developers and investors.

Zoned Multifamily High-Rise, the property is well-suited for a multi-unit residential building or apartment complex. Though landlocked, it sits within a growing and desirable neighborhood, surrounded by existing residential developments and in close proximity to major amenities.

23,500 sq. ft. or 0.54 acre

Zoned for Multifamily High-Rise Development

Flat, build-ready land

Close to schools, shopping, and the Grand Lucayan Waterway

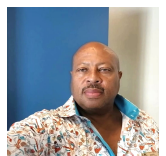
Quiet, established area with long-term growth potential

With strong zoning an...read more on our website.

Lot Size: 0.54

Living Area: 23,500

Subdivision: Caravelle Bay



Dwayne King

Phone: (242)441-3877

dwaynekingssales@gmail.com



**\$40,000 ID# 1070262** [View Online](#)  
[www.sarlesrealty.com](http://www.sarlesrealty.com)