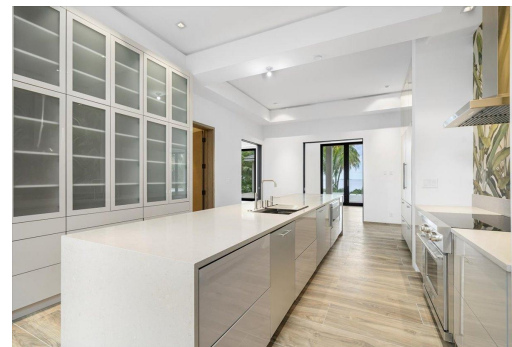
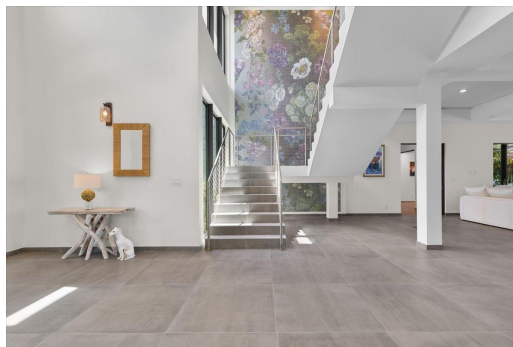
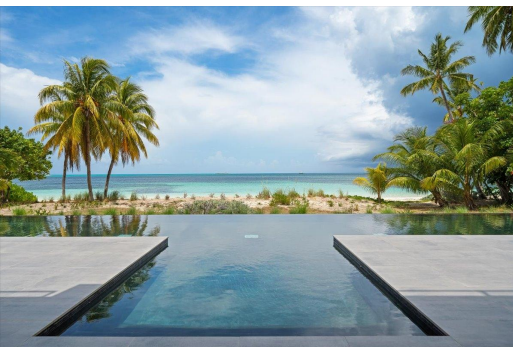


RESIDENCE ON CLIFTON BAY, Lyford Cay, New Providence/Paradise Island



Set on 1.5 acres of unspoiled beachfront along the secluded shores of Clifton Bay, Beluga Estate is...

Set on 1.5 acres of unspoiled beachfront along the secluded shores of Clifton Bay, Beluga Estate is an estate in the exclusive enclave of Lyford Cay. In a community known for its legacy, privacy, and quiet sophistication, this property offers a sanctuary for generations to come. Thoughtfully positioned to maximize sea views, the over 11,000 square foot residence blends contemporary architecture with tropical fauna. (This home is perfectly positioned to capture uninterrupted views of the sea and sunsets.) Expansive hurricane impact windows flood the house with natural light. From the moment you pull up to the front door, one can see the turquoise sea sparkling in the distance. A striking double-height entryway with a custom Bisazza mosaic feature wall sets the tone for the estate's grande...read more on our website.

Bedrooms: 5
Bathrooms: 5
Lot Size: 65340
Subdivision: Lyford Cay
Features: 24 Hour Security, Beach Front, Family Oriented, Gated Community, Impact Windows, Landscaped, Main Level Entry, Pets Allowed, Quiet Area, Recreation Nearby, Road - Paved, Shopping Nearby, Stand-by Generator, Swimming Pool, View - Ocean

RESIDENCE ON CLIFTON BAY,
Lyford Cay, New
Providence/Paradise Island
Phone:



\$43,500,000 ID# M63437 [View Online](#)
www.sarlesrealty.com