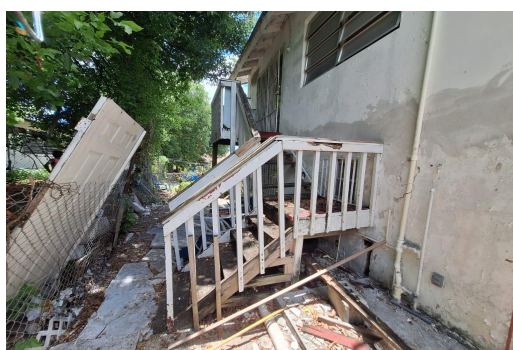
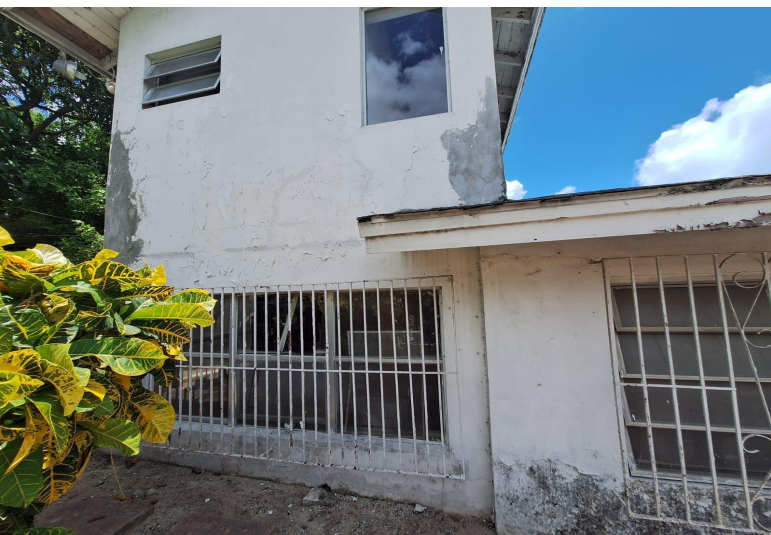


# VICTORIA BLVD TRIPLEX, East Street, New Providence/Paradise



**This 4 bedroom 4 bathroom triplex offers a great opportunity for homeowners or investors looking to...**

This 4 bedroom 4 bathroom triplex offers a great opportunity for homeowners or investors looking to generate rental income. Conveniently located just off East Street, the property is close to shopping and a nearby park, providing a mix of accessibility and recreational options for residents. Each unit in this triplex offers comfortable living space, making it ideal for families, professionals, or tenants seeking convenience and value. Whether you are looking to invest or create a home with income potential, this property provides a solid foundation for future possibilities. Schedule your viewing today and discover all this triplex has to offer!...read more on our website.

Bedrooms: 4

Bathrooms: 4

Lot Size: 6000

Subdivision: East Street

Features: Adult Oriented,

Cable, Can Be Rented,

Easy Access, Family

Oriented, Fully Fenced,

Furnished, Garden Area,

Kitchen Built-in(s), Low

Maint Yard, Main Level

Entry, Phone to Lot,

Road - Paved, Seniors

Oriented, Shopping

Nearby

VICTORIA BLVD TRIPLEX, East

Street, New Providence/Paradise

Island

Phone:



**\$275.000 ID# M63032 View Online**  
**[www.sarlesrealty.com](http://www.sarlesrealty.com)**