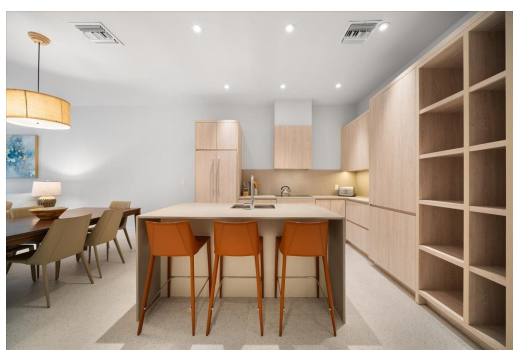


D-4 WESTEND, Love Beach, New Providence/Paradise Island



This newly completed ground floor unit showcases an exceptionally spacious living area with a...

This newly completed ground floor unit showcases an exceptionally spacious living area with a seamless open-concept design, offering unparalleled comfort & elegance. This unit includes three bedrooms & two bathrooms, making it perfect for families or those who love to entertain. The modern kitchen is a chef's dream equipped with high-end appliances & all necessary kitchen items for a seamless culinary experience. The spacious primary bedroom serves as a private retreat, featuring a walk-in closet & large bathroom for ultimate relaxation. Two additional bedrooms & a second bathroom provide ample space for guests. The generous ground floor patio offers abundant privacy, perfect for relaxing & hosting. Fully furnished with tasteful island chic furniture, this move-in-ready home includes impac...read more on our website.

Bedrooms: 3

Bathrooms: 2

Lot Size: 0

Subdivision: Love Beach

Features: 24 Hour

Security, Adult Oriented,

Can Be Rented, Family

Oriented, Furnished,

Gated Community,

Kitchen Built-in(s),

Landscaped, Stand-by

Generator

D-4 WESTEND, Love Beach,

New Providence/Paradise Island

Phone:



\$6,000 ID# M63414 [View Online](#)
www.sarlesrealty.com