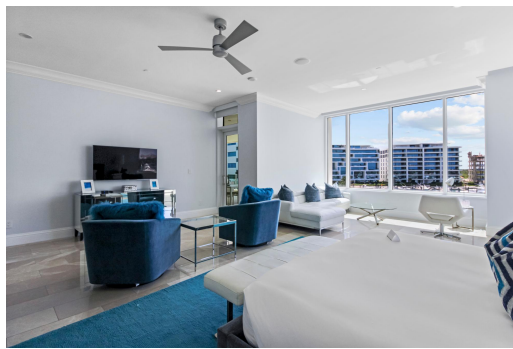


ALBANY, South Ocean, New Providence/Paradise Island



Unit 4A in the prestigious Charles building is a stunning, turn-key residence designed to...

Unit 4A in the prestigious Charles building is a stunning, turn-key residence designed to perfection and ready for immediate occupancy. Created by the renowned Gwathmey Siegel Kaufman Architects, this exceptional property overlooks the breathtaking Albany Mega Yacht Marina. Boasting 5 bedrooms and 5.5 bathrooms, the unit spans an impressive 5,334 sq. ft. of interior living space, complemented by a 965 sq. ft. balcony. Floor-to-ceiling glass sliding doors flood the home with natural light and showcase the panoramic marina views. The private master suite offers a spacious lounge area, his-and-hers closets, and captivating water views. Each guest room features an ensuite bathroom, while a bonus theater room with a built-in bar elevates the home's luxury appeal. As part of the exclusive Alba...read more on our website.

Bedrooms: 5
Bathrooms: 5
Lot Size: 6299
Subdivision: South Ocean
Features: 24 Hour Security, Cable, Can Be Rented, Family Oriented, Furnished, Gated Community, Hot Tub, Hurricane Windows, Kitchen Built-in(s), Marina Nearby, Night Security, View - Ocean

ALBANY, South Ocean, New Providence/Paradise Island
Phone:



\$8.250,000 ID# M61269 [View Online](#)
www.sarlesrealty.com