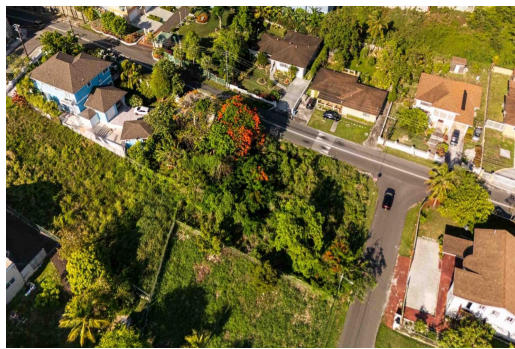


# TROPICAL GARDENS RD., West Bay Street, New Providence/Paradise Island



**Prime Lot | 13,052 sq ft | Nassau, Western End | Step into your next big opportunity with this rare...**

Prime Lot | 13,052 sq ft | Nassau, Western End | Step into your next big opportunity with this rare gem tucked away in the coveted, family-friendly enclave of Tropical Gardens. Spanning 13,052 sq ft, this expansive lot sits at the base of a gentle hill, offering subtle elevation, natural drainage, and an ideal canvas for your dream home or investment property. Located on the highly desirable western end of New Providence, you're just minutes from shopping, schools, beaches, and the airport – yet perfectly positioned in a peaceful, established neighborhood that exudes charm and value. – Why You'll Love It: – Generous 101.2 x 120 ft lot – ready for your vision – Zoned residential – ideal for your forever home or vacation villa – Clean, quiet, and upscale area with consistent pro...read more on our website.

Bedrooms: 0

Bathrooms: 0

Lot Size: 13052

Subdivision: West Bay Street

Features: None

Lot 15 TROPICAL GARDENS RD., West Bay Street, New Providence/Paradise Island

Phone:



**\$255.000 ID# M61882 [View Online](#)**  
**[www.sarlesrealty.com](http://www.sarlesrealty.com)**