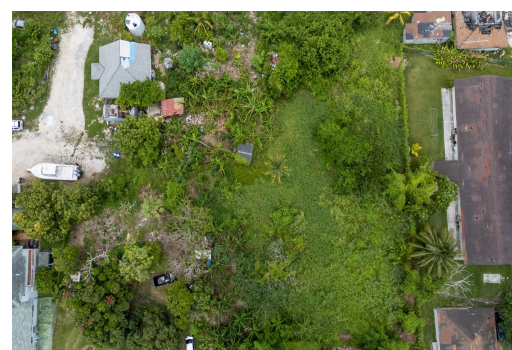


# 8, LITTLE ACRES, Marshall Road, New Providence/Paradise



## Investor's dream! This spacious 10,557 sq ft multi-family lot offers endless potential for...

Investor's dream! This spacious 10,557 sq ft multi-family lot offers endless potential for generating steady rental income. Zoned for multi-family use, it's perfect for building duplexes, triplexes, or even a small apartment complex. Located in a desirable neighborhood with easy access to schools, shopping, public transportation, and major commuter routes. Whether you're a seasoned developer or a first-time investor, this is a rare opportunity to secure a high-demand rental location with great ROI potential....read more on our website.

Bedrooms: 0

Bathrooms: 0

Lot Size: 10557

Subdivision: Marshall Road

Features: Easy Access,  
Family Oriented, Highway  
Access, None, Quiet  
Area, Treed Lot

LOT 8, LITTLE ACRES, Marshall  
Road, New Providence/Paradise  
Island  
Phone:



**\$130.000 ID# M63371** [View Online](#)  
[www.sarlesrealty.com](http://www.sarlesrealty.com)