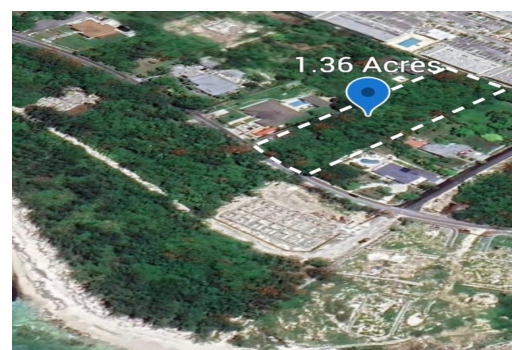
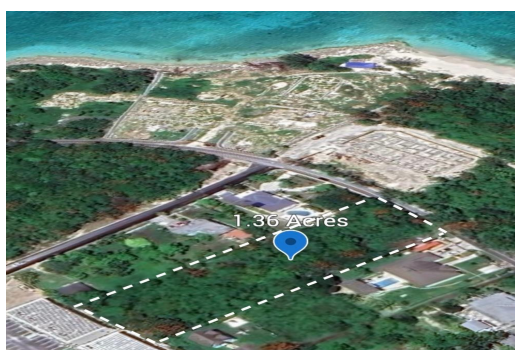


WEST BAY STREET, Love Beach, New Providence/Paradise Island



Discover 1.36 acres of prime real estate nestled in the exclusive Love Beach Subdivision, just off...

Discover 1.36 acres of prime real estate nestled in the exclusive Love Beach Subdivision, just off prestigious West Bay Street. This rare blank canvas is currently zoned Single Family but holds the potential to be zoned Multi-Family, subject to approval by Town Planning, surrounding properties are Multi-Family. Which makes this a strategic opportunity to design and build your private dream estate or a collection of luxury vacation villas. Perched in a highly desirable location, Lot 53 boasts potential partial ocean views from the second or third floor, and is just a 3-minute stroll to the beach. Whether you're envisioning serene living or a high-yield investment property, this land delivers both. Enjoy privacy and tranquility, all while being minutes from Nassau's best restaurants, the i...read more on our website.

Bedrooms: 0

Bathrooms: 0

Lot Size: 59242

Subdivision: Love Beach

Features: Acreage, None,

Quiet Area, View - Ocean

WEST BAY STREET, Love

Beach, New Providence/Paradise

Island

Phone:



\$730.000 ID# M63331 [View Online](#)
www.sarlesrealty.com