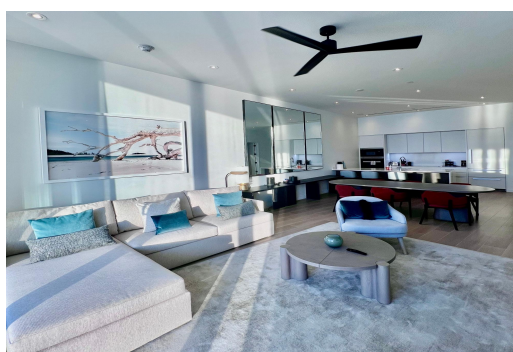


GOLDWYNN, West Bay Street, New Providence/Paradise Island



Indulge in the pinnacle of opulence within this extraordinary and avant-garde oceanfront...

Indulge in the pinnacle of opulence within this extraordinary and avant-garde oceanfront condominium nestled within the prestigious GoldWynn Residence. Boasting two lavish bedrooms, two exquisitely appointed bathrooms, and a sprawling 1400 square feet of meticulously designed living space complemented by an additional 400 square feet of private balcony/patio space, this residence epitomizes unparalleled luxury living. Immerse yourself in awe-inspiring ocean vistas and captivating sunsets, ensuring every moment is imbued with the splendor of golden hours. The Residences at GoldWynn redefine contemporary island living, seamlessly blending a luxury condo hotel experience with 75 exclusive beachfront residences. Enjoy an array of world-class amenities, including a beachfront infinity pool, ele...read more on our website.

Bedrooms: 2

Bathrooms: 2

Lot Size: 348480

Subdivision: West Bay Street

Features: 24 Hour

Security, Fully Walled,

Furnished, Hurricane

Windows, Main Level

Entry, Swimming Pool,

Wheelchair Access

GOLDWYNN, West Bay Street,
New Providence/Paradise Island
Phone:



\$11,000 ID# M63230 [View Online](#)
www.sarlesrealty.com